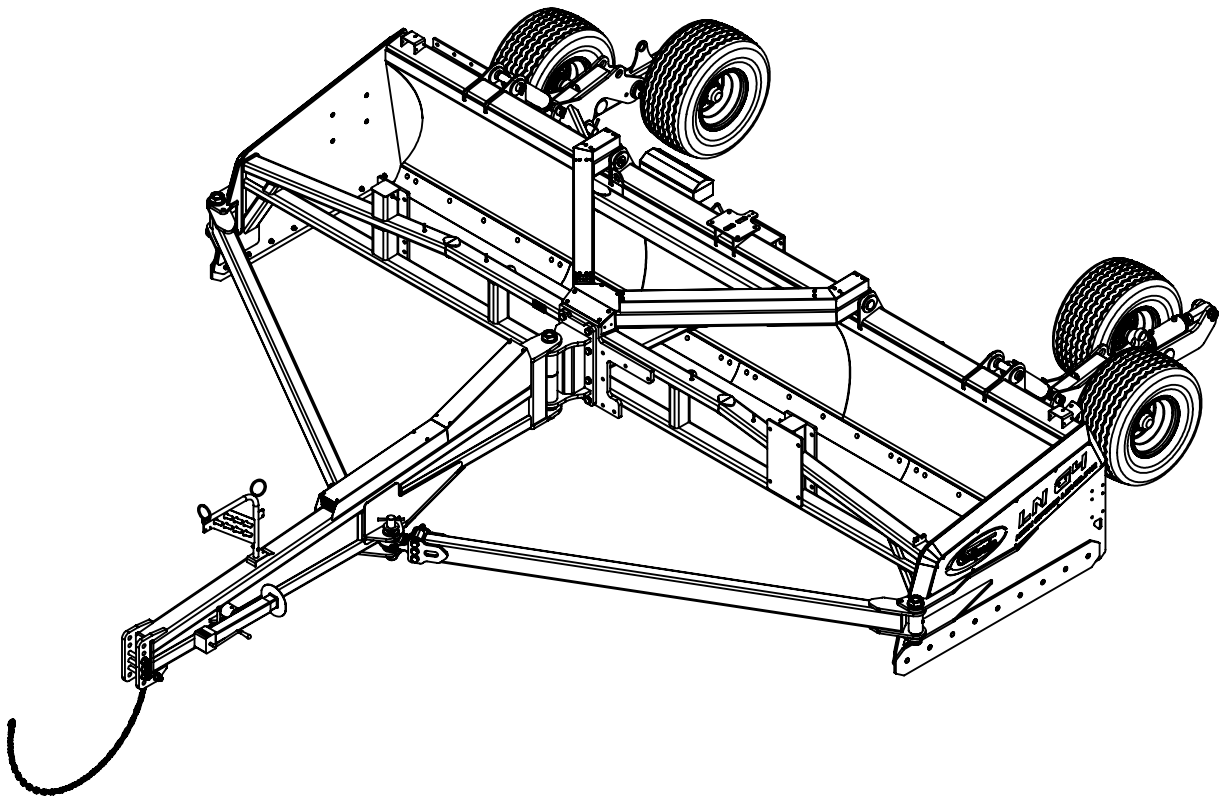




# OWNER'S MANUAL



CAT # N02-6003\_ANG

## LAND LEVELER LN G4





Introduction .....	4
Security .....	5
Technical specifications .....	10
Procedures for transporting .....	13
Maintenance .....	18
Parts .....	19
Warranty .....	38
Product registration .....	39



Congratulations on your purchase of your new  
**S. Houle inc**, equipment!

This equipment will advantageously complement your agricultural machinery. It has been designed and built specifically for an agricultural market that is always in need of more efficient, better performing equipment.

This **Owner's Manual** is your principal reference in regards to your new equipment. To ensure your equipment delivers many years of quality use, it is important that you follow the use and maintenance guidelines set out in this manual. We urge you and those who will be using and/or performing maintenance on this equipment to ensure that **you have read and understood the contents of this manual prior to first use.**

Please keep this **Owner's Manual** within reach so that you may quickly consult it, as often as necessary. In case of ownership transfer, please ensure that you also remit this manual to the new owner or user.

Should you have any questions, or to obtain more information or additional copies of this manual, please contact us at:

**S. Houle Inc.**

300 Industrial Boulevard  
St-Germain-de-Grantham, Qc. Canada J0C 1K0  
Tel.: (819) 395-4380 Fax: (819) 395-5516  
Toll Free: 1-888-404-4380  
Email: info@shoule.com  
Web: www.shoule.com

*Locate this symbol – it could save your life*

This symbol is the standard safety symbol. You will find it on most of the decals on your equipment. It is also used throughout this manual.

This symbol is used mainly to draw your attention and to warn you of possible dangers and/or potential injuries.



**It is vital that you read and understand completely the following instructions and safety rules prior to using your equipment.**



The safety symbol accompanied by the word “DANGER” indicates an immediate danger capable of causing serious injury or death.



The safety symbol accompanied by the word “WARNING” indicates a potential danger capable of causing serious injury or death.



The safety symbol accompanied by the word “CAUTION” indicates a potential danger capable of causing injury.

Being well informed is your best protection against accidents. It is therefore important that you give particular attention to the safety guidelines presented in this manual.

**Think SAFETY! Work SAFELY!**



As the owner of this equipment, you are responsible for the safety of its users and those who are responsible for its maintenance. You and any other person using or performing maintenance on this equipment must be familiar with its operation and maintenance, as well as the safety measures contained in this manual. Having safe working practices guarantees a safer work environment.

The owner of this equipment must inform any user of all instructions related to proper operation and use of this equipment, prior to first use.

The user must read, understand and respect all operating and safety instructions contained in this manual. A user who is unaware or ignores the operating and safety instructions contained herein is not qualified to operate this equipment, and exposes him/herself and bystanders to possible serious injury and or death.

Do not in any way modify this equipment. Unauthorized modifications could impair the proper functioning and/or safety of this equipment and possibly affect its useful life as well.

### **General Safety Measures**

1. Read and understand all operating and safety instructions and guidelines contained in this manual prior to using, maintaining or adjusting the equipment.
2. Ensure all safety guards and shields are properly installed prior to using the equipment.
3. Always have a first aid kit within reach, and know how to use it.
4. Always have a fire extinguisher within reach, and know how to use it.
5. Wear appropriate safety gear, such as: hard hat, safety boots, safety goggles, gloves, ear plugs, etc.
6. Clear the area of people, especially children, prior to engaging the equipment.

### **Operating Safety**

In addition to reading and fully understanding this manual,



you should:

1. Lower the equipment, stop the tractor's engine, set controls to neutral, engage the emergency brake, remove the tractor's ignition key and wait for all moving parts to come to a full stop prior to detaching or servicing the equipment.
2. Keep hands, feet, hair and all clothing away from all moving parts and/or rotating parts.
3. Do not allow bystanders on the equipment or the tractor.
4. Do not remove protective guards or shields. Ensure they are in place and properly attached.
5. Clear the area of all people, especially small children, prior to engaging the equipment and/or the tractor.
6. Be extremely cautious while servicing or while near high pressure hydraulic systems. Ensure all components are fully sealed and in good working order prior to operating the equipment.
7. Ensure all reflectors, lights and the safety triangle are clean prior to transportation on public roads. Check with local authorities to ensure you are compliant with all lighting requirements.

### **Maintenance Safety**

In addition to reading and fully understanding this manual, you should:

1. Lower the equipment, stop the tractor's engine, set controls to neutral, engage the emergency brake, remove the tractor's ignition key and wait for all moving parts to come to a full stop prior to detaching or servicing the equipment.
2. Keep hands, feet, hair and all clothing away from all moving parts.
3. Clear the area of all people, especially small children, prior to engaging the equipment and/or the tractor.
4. Place safety stands or blocks underneath the frame prior to working underneath the equipment.

5. Be extremely cautious while servicing or while near high pressure hydraulic systems. Ensure all components are fully sealed and in good working order prior to operating the equipment. Wear appropriate safety gear to protect your eyes and hands. Use a piece of wood or cardboard as a shield when examining a hose or fitting for a leak.
6. Always relieve pressure prior to disconnecting or servicing hydraulics.
7. Always use original parts when any need replacing.
8. Do not in any way modify this equipment, its components or its intended use. Fabrication S.Houle inc. will not be held responsible should breakage or injury occur as a result of using any non-approved parts or accessories.
9. Do not operate equipment that is defective or that has parts missing.
10. Inspect nuts and bolts regularly and ensure they are tightly secured.

### **Hydraulic System Safety**

In addition to reading and fully understanding this manual, you should:

1. Always set the hydraulic controls to neutral prior to disassembling the hydraulic system.
2. Be extremely cautious while servicing or while near high pressure hydraulic systems. Ensure all components are fully sealed and in good working order prior to operating the equipment. Wear appropriate safety gear to protect your eyes and hands. Use a piece of wood or cardboard as a shield when examining a hose or fitting for a leak.

### **Transportation Safety**

In addition to reading and fully understanding this manual, you should:

1. Check with local authorities to ensure you are compliant with all machinery transportation safety requirements.





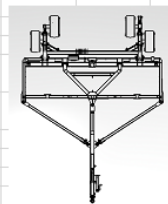
**Storage Safety**

1. Store the equipment in an area well away from human activity.
2. Store the equipment in the lowered position.
3. Do not allow children to play near the stored equipment.

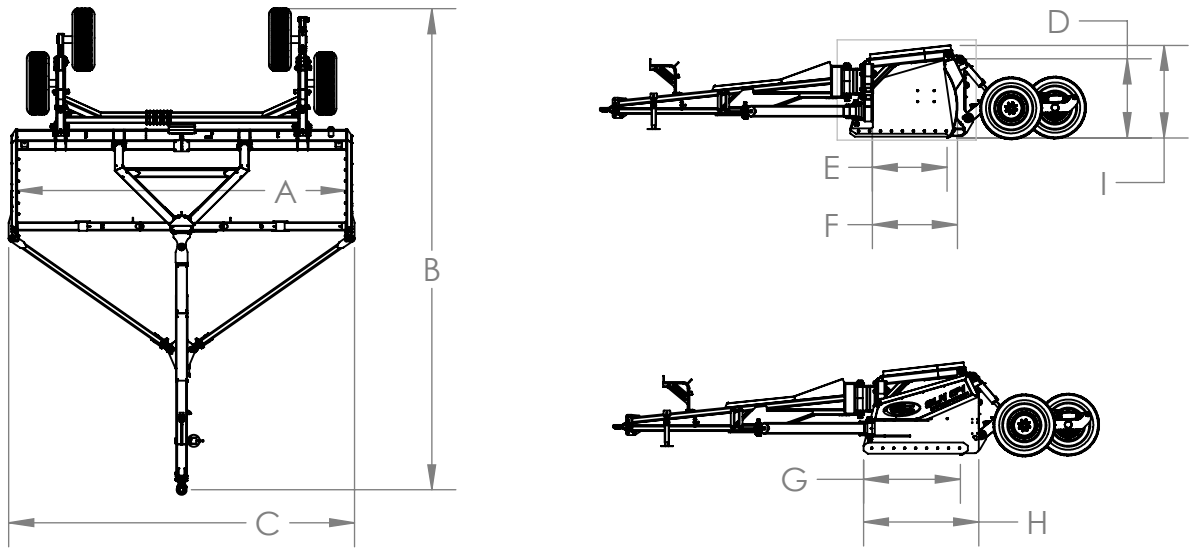


# GENERAL SPECIFICATION

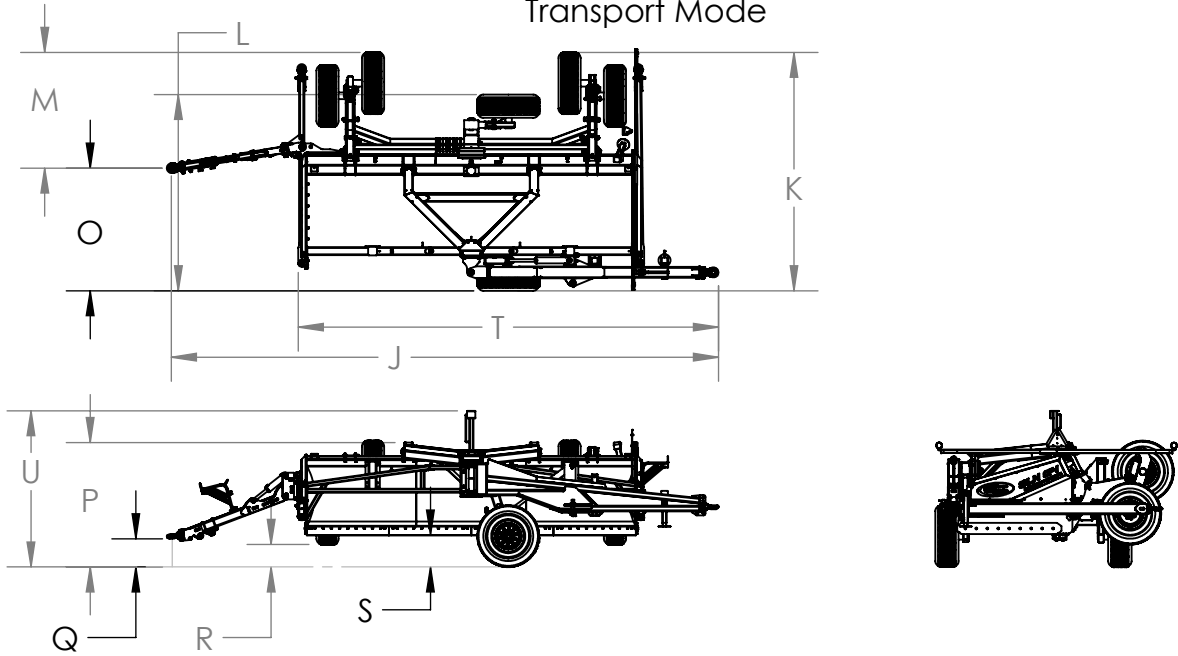
		General Specification											
Model		LNS-12	LNS-14	LNS-16	LN-14	LN-16	LN-18	LN-20	SLN-16	SLN-18	SLN-20	SLN-22	SLN-24
Box volume	PI*3 (Yard)	120 (4.44)	140 (5.19)	160 (5.99)	215 (7.96)	245 (9.07)	275 (10.19)	305 (11.30)	360 (13.33)	405 (15.00)	450 (16.67)	495 (18.33)	540 (20.00)
Box interior dimension													
Width	PI	12	14	16	14	16	18	20	16	18	20	22	24
Height	PO	38	38	38	45	45	45	45	57	57	57	57	57
Length	PO	44	44	44	54	54	54	54	61.5	61.5	61.5	61.5	61.5
External dimension working position													
Width	PI	13	15	17	15	17	19	21	17	19	21	23	25
Height	PO	45	45	45	53	53	53	53	66.5	66.5	66.5	66.5	66.5
Length	PI	21.25	21.25	21.25	25	25	25	25	29.25	29.25	29.25	29.25	29.25
Outside dimension transport position													
Ground clearance height	po	no transport kit	no transport kit	no transport kit	no transport kit	no transport kit	12"	12"	transport kit	16"	16"	16"	16"
Width on the road	pi - po	transport kit	transport kit	transport kit	transport kit	transport kit	12' - 8"	13' - 4"	transport kit	14'-8"	14'-8"	14'-9"	15'-6"
Length	pi - po	transport kit	transport kit	transport kit	transport kit	transport kit	31' - 8"	32' - 8"	transport kit	32'-8"	33'-8"	34'-8"	35'-8"
hydraulic													
Max Pressure	PSI	3000	3000	3000	3000	3000	3000	3000	3000	3000	3000	3000	3000
Basic Land leveler function	N of Hydraulic Function	2	2	2	2	2	2	2	2	2	2	2	2
Tandem function Right (option)	N of Hydraulic Function	1	1	1	1	1	1	1	1	1	1	1	1
Decompaction teeth function (option)	N of Hydraulic Function	1	1	1	1	1	1	1	1	1	1	1	1
Transport Kit Function (option)	N of Hydraulic Function	no transport kit	no transport kit	no transport kit	no transport kit	no transport kit	2	2	no transport kit	2	2	2	2
Tandem tire													
Tire BKT TR 315 31 X 15.5-15	Available tire type	X	X	X									
Tire BKT AW705 15.0/55-17 18PRTL LABOURER+17X13X8VG BKT	Available tire type				X	X	X	X					
Tire BKT TR882 400/60-15.5 18PRTL SGL+15.5X13X8VG BKT	Available tire type				X	X	X	X					
Tire BKT FLOTATION 648 400/60-22.5 16PRTL SGL+22.5X11.75X8 VG	Available tire type								X	X	X	X	X
425/65R22.5 USE (Truck) (8 Bolts)	Available tire type								X	X	X	X	X
425/65R22.5 New (Truck) (8 Bolts)	Available tire type								X	X	X	X	X
Tire BKT FLOTATION 648 500/50/22.5 16PRTL SGL+22.5X16X8	Available tire type								X	X	X	X	X
Tire transport kit (Option)													
425/65R22.5 (Truck) (10 Bolts)	Available tire type									X	X	X	X
Truck BKT AW705 15.0/55-17 18PRTL LABOURER+17X13X8VG BKT	Available tire type						X	X					
Blade													
Type of Blade	TYPE DE COUPEAU	2X Round Blade 5/8" X 6" X 6'	2X Round Blade 5/8" X 6" X 7'	2X Round Blade 5/8" X 6" X 8'	2X Round Blade 5/8" X 6" X 7'	1X Round Blade 5/8" X 6" X 6' 2X Round Blade 5/8" X 6" X 5'	3X Round Blade 5/8" X 6" X 6'	4X Round Blade 5/8" X 6" X 5'	2X Round Blade 3/4" X 8" X 6' 1X Round Blade 3/4" X 8" X 4'	3X Round Blade 3/4" X 8" X 6'	4X Round Blade 3/4" X 8" X 5'	1X Round Blade 3/4" X 8" X 8' 2X Round Blade 3/4" X 8" X 7'	4X Round Blade 3/4" X 8" X 6'
Decompaction tooth (Option)													
Max penetration depth	po	4	4	4	4	4	4	4	4	4	4	4	4
Subsoiler tooth option With Trigger	number of teeth recommande				7	9	9	11	9	9	11	13	15
Land Leveler Weight													
Land Leveler Weight	lb	6700	7050	7400	9000	9500	10000	10750	13500	14500	15000	15500	16000
Weight Transport Kit	lb	no transport	no transport	no transport	no transport	no transport	2750	2750	no transport	2750	2750	2750	2750
Weight standard decompaction kit	lb				1150	1250	1300	1350	1350	1400	1425	1450	1475
Weight compaction kit with trigger	lb	N/A	N/A	N/A	1750	2000	2050	2350	2200	2250	2500	2800	3050
Tandem articuler													
max misalignment of the tandem	po	3.5	3.5	3.5	5	5	5	5	5 3/8	5 3/8	5 3/8	5 3/8	5 3/8
Tire Pressure													
Tire BKT TR 315 31 X 15.5-15	PSI	60											
Tire BKT AW705 15.0/55-17 18PRTL LABOURER+17X13X8VG BKT	PSI	65											
Tire BKT TR882 400/60-15.5 18PRTL SGL+15.5X13X8VG BKT	PSI	65											
400/60-22.5 16PRTL SGL+22.5X11.75X8 VG	PSI	60											
425/65R22.5 USAGÉ (Truck)	PSI	120											
425/65R22.5 NEUF (Truck)	PSI	120											
500/50/22.5 16PRTL SGL+22.5X16X8	PSI	40											
425/65R22.5 (Truck)	PSI	120											



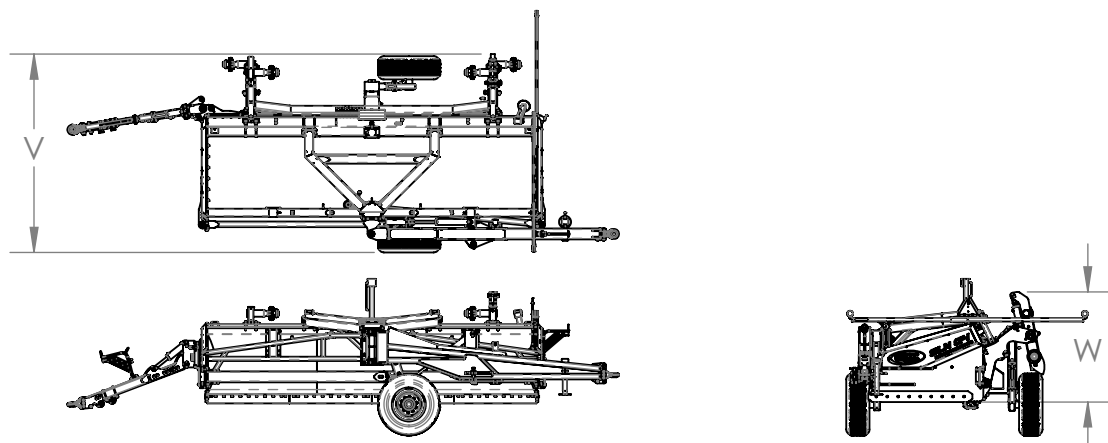
Work Mode



Transport Mode



Shipping mode flat bed



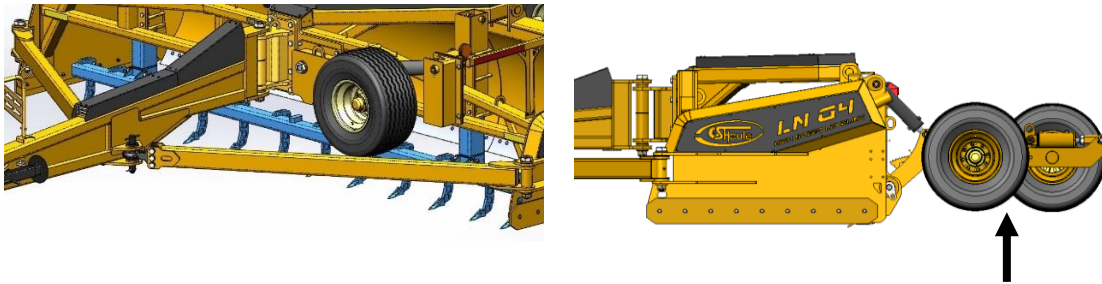


# GENERAL SPECIFICATION

## Niveleuse G4

	LNS-12	LNS-14	LNS-16	LN-14	LN-16	LN-18	LN-20	SLN-16	SLN-18	SLN-20	SLN-22	SLN-24
A	PI	12	14	16	14	16	18	20	18	20	22	24
B	PI	21.25	21.25	21.25	25	25	25	29.25	29.25	29.25	29.25	29.25
C	PI	13	15	17	15	17	19	21	19	21	23	25
D	po	38	38	38	45	45	45	57	57	57	57	57
E	po	38.5	38.5	38.5	47.5	47.5	47.5	54.5	54.5	54.5	54.5	54.5
F	po	44	44	44	54	54	54	61.5	61.5	61.5	61.5	61.5
G	po	51.5	51.5	51.5	62.5	62.5	62.5	70.5	70.5	70.5	70.5	70.5
H	po	62.25	62.25	62.25	74.75	74.75	74.75	84	84	84	84	84
I	po	45	45	45	53	53	53	66.5	66.5	66.5	66.5	66.5
J	po	N/A	N/A	N/A	N/A	363	375	N/A	387	399	411	432
K	po	N/A	N/A	N/A	N/A	151	151	N/A	174	174	174	174
L	po	N/A	N/A	N/A	N/A	133	133	N/A	143	143	143	143
M	po	N/A	N/A	N/A	N/A	72.5	72.5	N/A	84.5	84.5	84.5	84.5
O	po	N/A	N/A	N/A	N/A	78.5	78.5	N/A	89.5	89.5	89.5	89.5
P	po	N/A	N/A	N/A	N/A	72	72	N/A	91	91	91	91
Q	po	N/A	N/A	N/A	N/A	20.5	20.5	N/A	20.5	20.5	20.5	20.5
R	po	N/A	N/A	N/A	N/A	12	12	N/A	16.5	16.5	16.5	16.5
S	po	N/A	N/A	N/A	N/A	18	18	N/A	23	23	23	23
T	PI	18.5	18.5	18.5	20.5	22.5	23.5	282	294	306	318	330
U	PO	88	88	88	97	97	97	114	114	114	114	114
V	PO	108	108	108	122.5	122.5	122.5	144.5	144.5	144.5	144.5	144.5
W	PO	55	55	55	68.5	68.5	68.5	79	79	79	79	79
X	PO	N/A	N/A	N/A	88	88	88	104	104	104	104	104

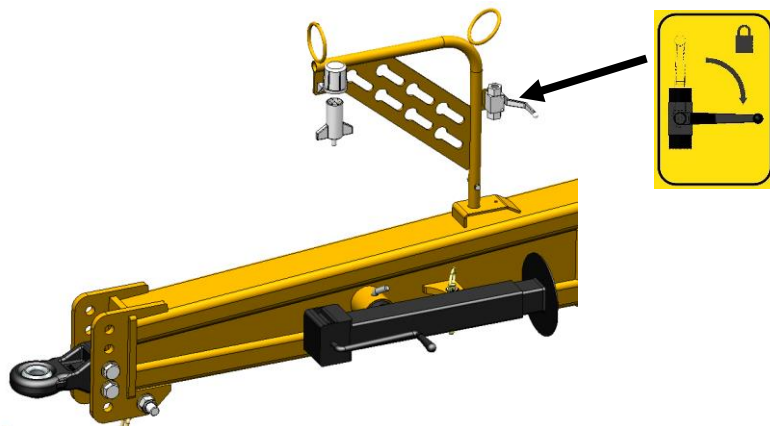
1. Lower the land leveler completely to the ground and raise the tandems to the maximum. If there is a set of decompaction teeth (optional), raise the teeth.



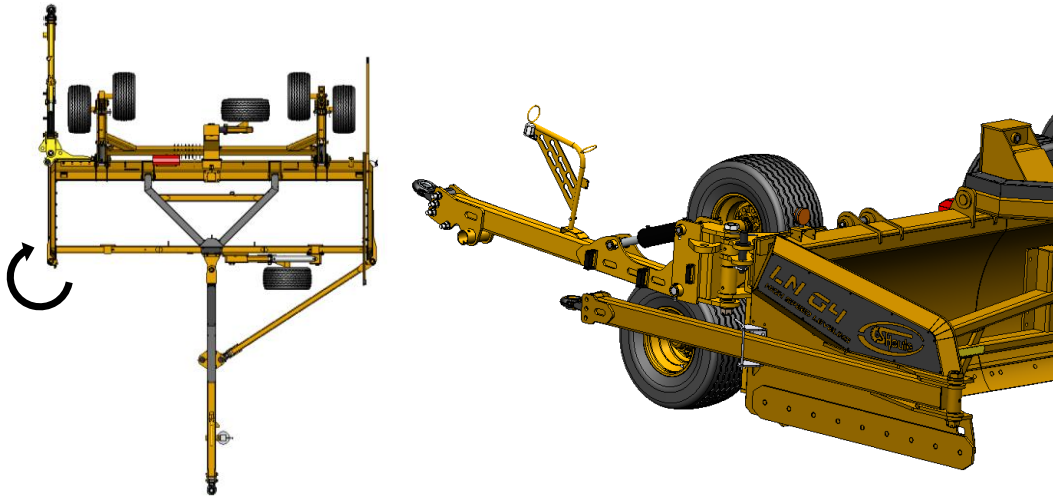
2. Turn the jack 90 ° and turn the crank until the weight of the Land leveler is no longer supported by the tractor.
3. Disconnect the land leveler from the tractor pull bar.
4. Advance the tractor until the drawbar is clear.
5. Lower the jack until it can not stand the land leveler. Remove the jack and place it in its support behind the land leveler.



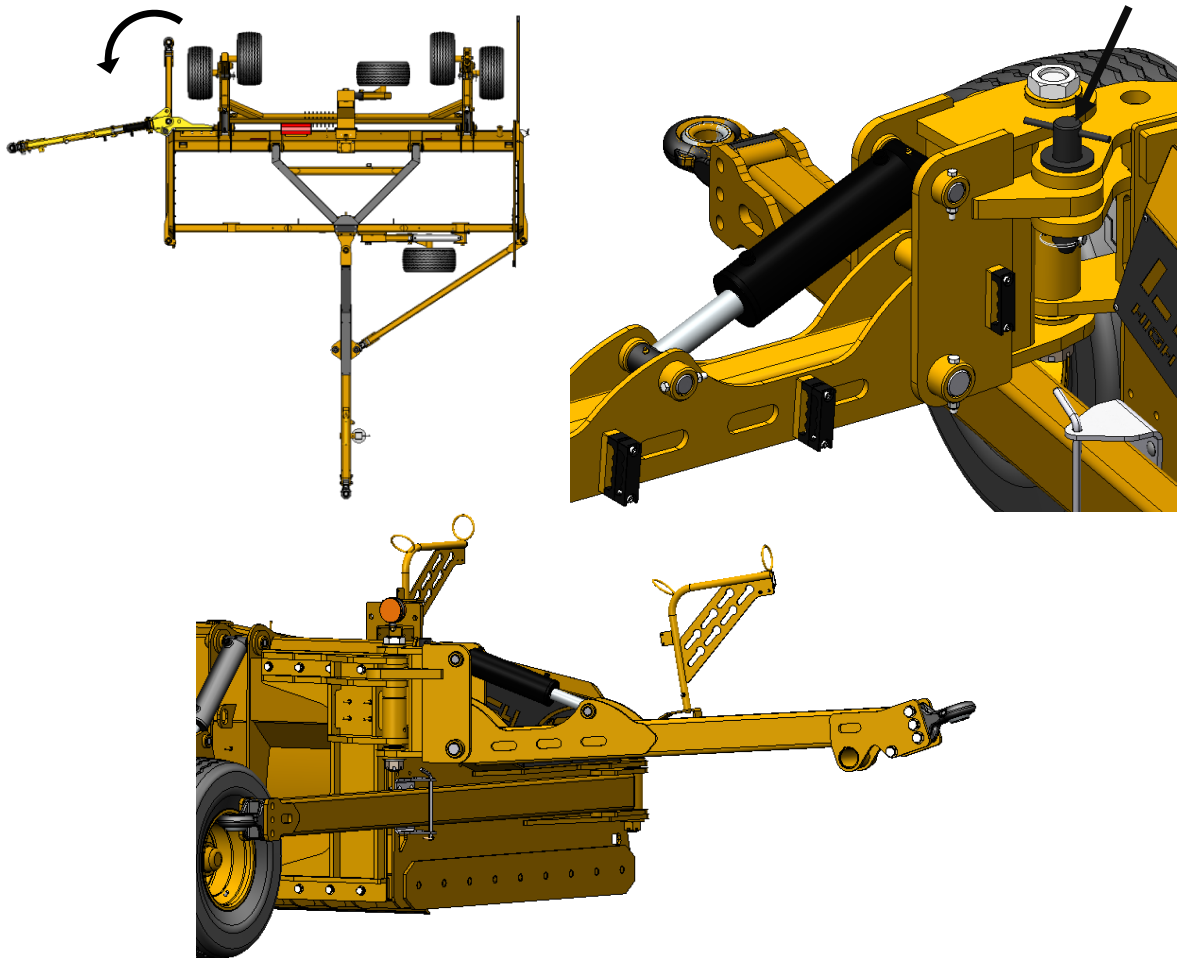
6. Close the swing arm cylinder valve.



7. Disconnect the right reinforcement arm and lock it in the anchorage provided for this purpose.



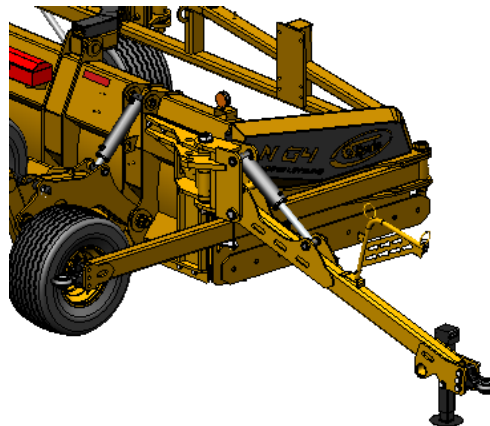
8. Rotate the transport drawbar and lock it in place. Be careful the drawbar must be in the high position to go over the reinforcement arm.



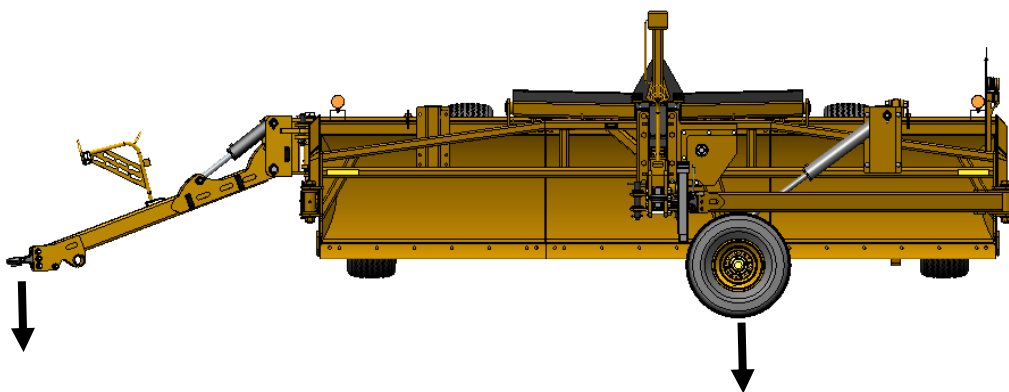
9. Open the signal support and lock it.



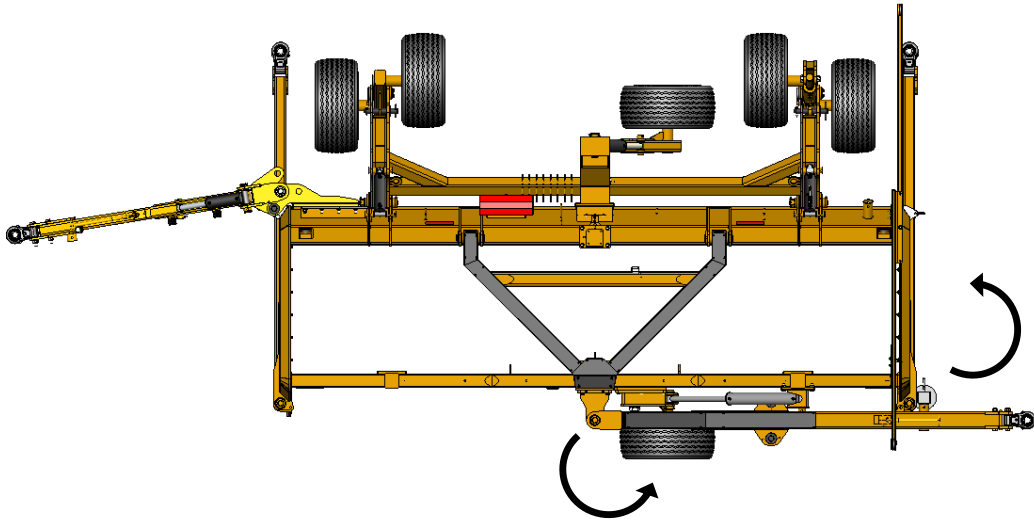
10. Move the tractor to the transport drawbar and connect to it. Use the tractor's hydraulic inlets to lower the drawbar at the tractor drawbar.



11. Mount the land leveler with the transport wheels and the transport drawbar while maintaining the level of the land leveler.



12. Fold the left reinforcement arm and the main drawbar. Do not forget to put the pin in the hands of attachment to prevent the ball joint out of hands.



13. Lock the position of the main drawbar with the pin provided for this purpose.

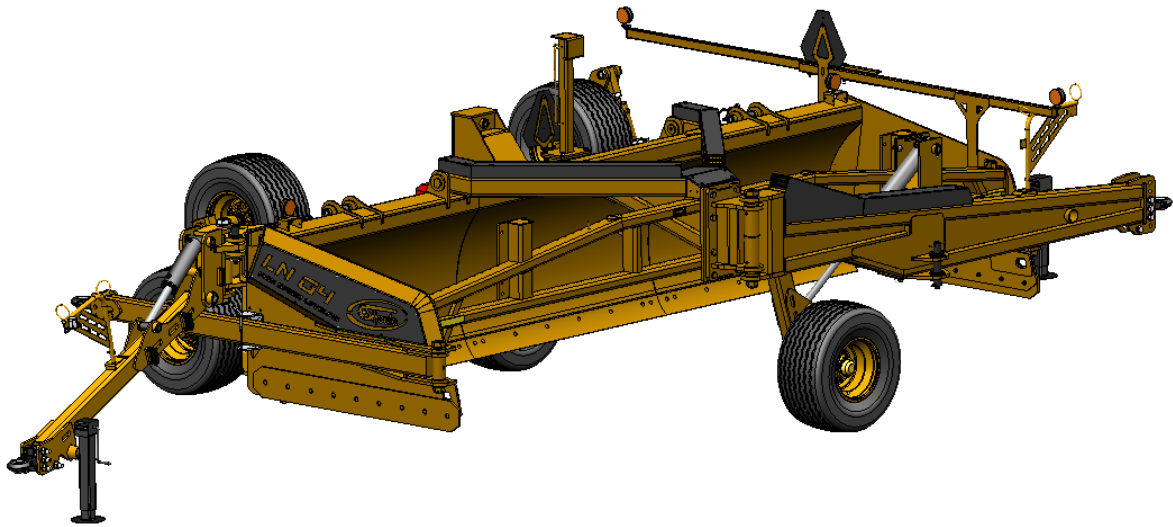


14. Lock the tandem position using the pin provided for this purpose.

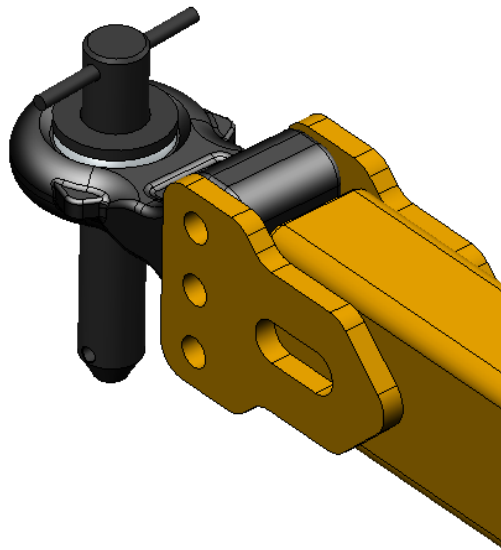




You are ready to use your land leveler on the road. To return the land leveler to work mode, reverse the steps.

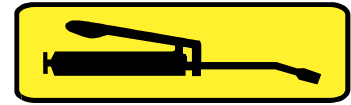


Warning. Leave the pin in the hands of ball joints to avoid losing the ball joint on the road during transport.



## Greasing

Locate the greasing decals (see illustration on right)



1. Use a manual grease gun
2. Clean the couplers and fittings with a clean cloth prior to lubricating
3. Replace and repair damaged or broken couplers
4. If couplers are difficult to lubricate, remove them so as to be able to clean them thoroughly, and replace them if necessary. Also clean the lubricant passageway
5. Inject lubricant until the excess is expelled through the bearing or bushing areas

## Types of Lubricants

### Grease

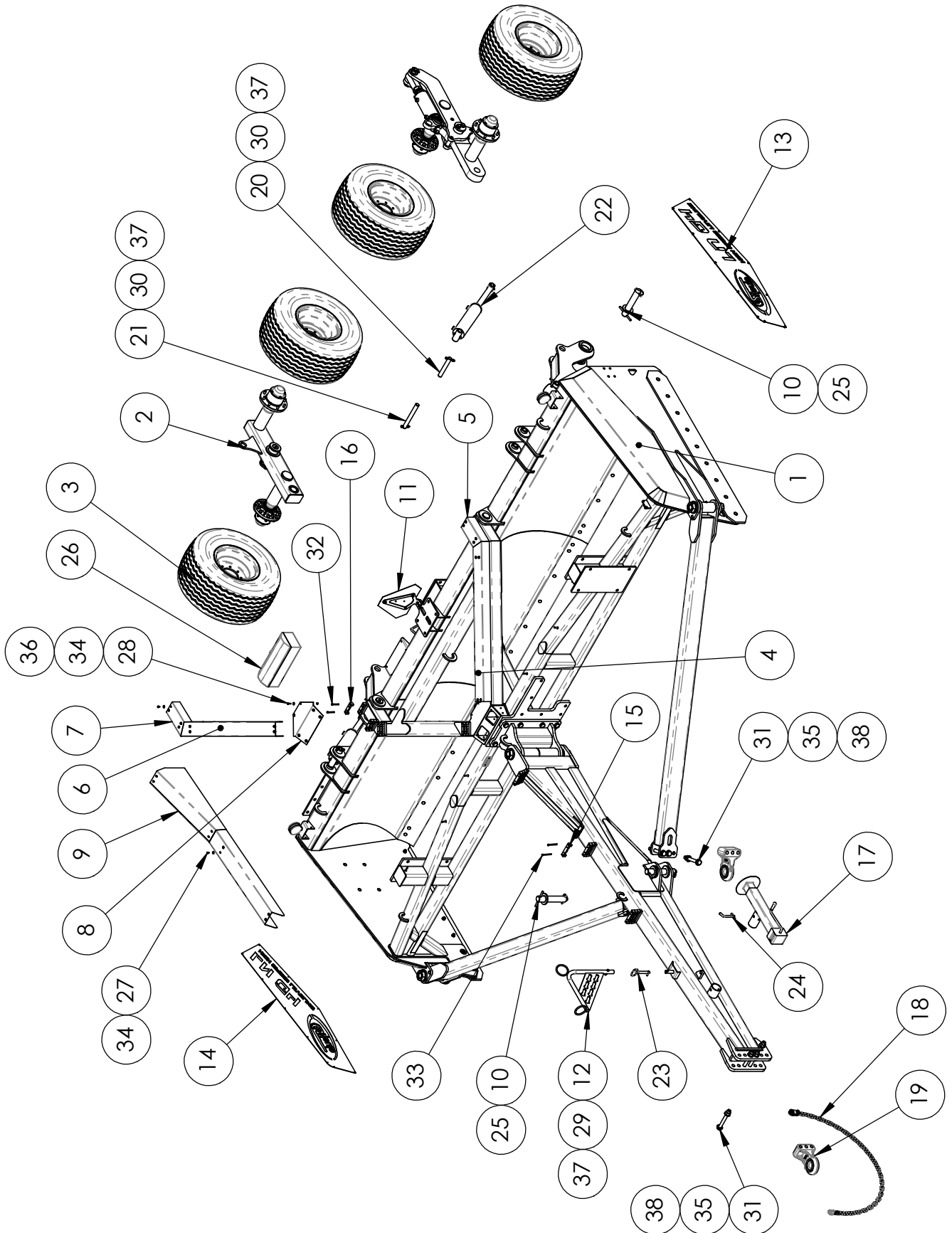
Use an SAE multi-purpose high temperature grease with extreme pressure (EP) performance†. A lithium-based SAE multi-purpose grease is also acceptable.



# LAND LEVELER LN (G4) 14', 16', 18', 20'

N0214-00006, N0216-00005, N0218-00011, N0220-00001

Parts



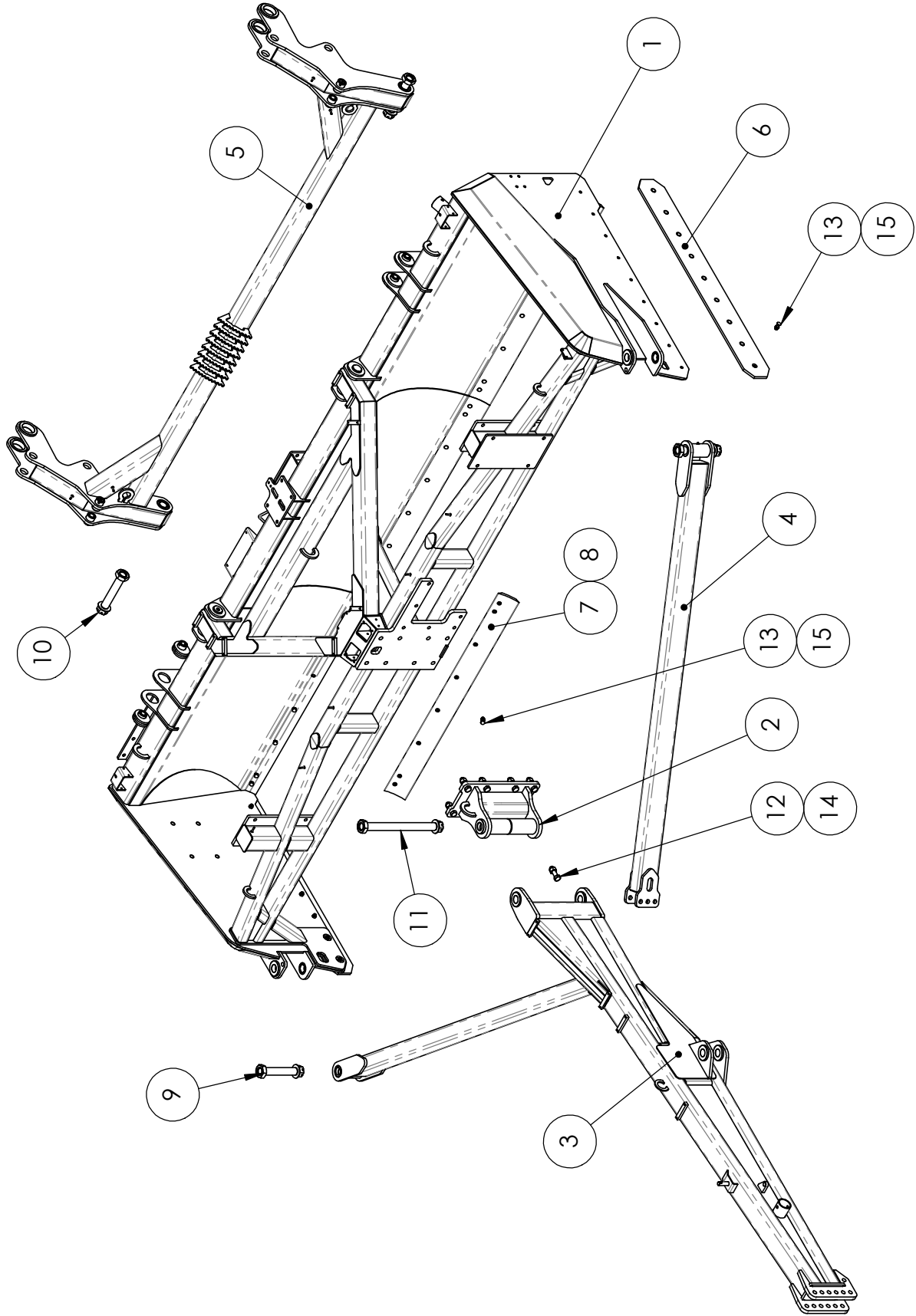
**LAND LEVELER LN (G4) 14',16',18', 20'***Parts***N0214-00006, N0216-00005, N0218-00011, N0220-00001**

ITEM	NO	DESCRIPTION	QTY
1	N0218-05E11	LAND LEVELER LN G4 18 FRAME KIT	1
2	N02-01E31	LN (G4) STANDARD ARTICULATED TANDEM KIT	1
3	N02-03E04	TIRE AND WHEEL 15.0/55-17 SET	1
4	N-04024	ARK GUARD LN G4	1
5	N-04025	ARK GUARD LN G4	1
6	N-04026	ARK GUARD LN G4	1
7	N-04027	ARK GUARD LN G4	1
8	N-04029	GUARD LN G4	1
9	N-04028	MAIN TIMON GUARD LN G4	1
10	N-25077	PIN 2" X 8 7/8"	4
11	N-36E16	LIGHT FOLDING HOLDER	1
12	N-43066	SWIVEL HOSE SUPPORT	1
13	N-59029-P5	LN G4 LOGO (GREY)	1
14	N-59030-P5	LN G4 LOGO (GREY)	1
15	UN-31021-6	HOSE CLAMP	9
16	UN-31021-7	HOSE CLAMP	16
17	UN-43062	JACK 8800 LBS ASS'Y	1
18	07037-4	CHAIN SAFETY 1/4" x 46" Lg - 21,000 lb	1
19	20013	BALL HITCH CAT. 4 (BH4SABA)	3
20	25AC1040808	PIN 1 1/4" ( 1 HOLE)	2
21	25AC1041100	PIN 1 1/4" ( 1 HOLE)	2
22	30014-3	HYD. CYLINDER 3 1/2" X 12" (BUSHING)	2
23	35006-8	PIN 3/4" X 4"	1
24	35011-4	BENT PULL PIN 5/8" X 4"	1
25	35048	LOCK PIN 3/8" X 2 1/2"	4
26	36006	42 cm STEEL TOOL BOX	1
27	45AA004200008	HEX BOLT 1/4-20NC x 1/2" GR5	22
28	45AA004200100	HEX BOLT 1/4-20NC x 1" GR5	6
29	45AA006160200	HEX BOLT 3/8-16NC x 2" GR5	1
30	45AA006160300	HEX BOLT 3/8-16NC X 3" GR5	4
31	45AB100080800	HEX BOLT 1"-8NC X 8" GR8	10
32	45BA005180208	SOCKET CAP SCREW 5/16-18NC X 2 1/2"	16
33	45BA005180308	SOCKET CAP SCREW 5/16-18NC X 3 1/2"	6
34	46AA004	FLAT WASHER 1/4"	28
35	46AB100	HARDENED FLAT WASHER 1"	20
36	47AB00420	NYLON LOCK NUT 1/4-20 NC	2
37	47AB00616	NYLON LOCK NUT 3/8"-16NC	5
38	47AB10008	NYLON LOCK NUT 1"-8NC	10



**LAND LEVELER LN (G4) FRAME KIT 14', 16', 18', 20'**  
N0214-05E06, N0216-05E05, N0218-05E11, N0220-05E01

Parts





# LAND LEVELER LN (G4) FRAME KIT 14', 16', 18', 20'

Parts

N0214-05E06, N0216-05E05, N0218-05E11, N0220-05E01

ITEM	PART NUMBER		DESCRIPTION	QTY
	14'	16'		
1	N-05299	N-05292	FRAME LN G4	1
2	N-05278	N-05278	SWIVEL DRAWBAR LN G4	1
3	N-05279	N-05279	MAIN DRAWBAR LN G4	1
4	N-05300	N-05294	REINFORCEMENT BAR LN G4	2
5	N-01180	N-01177	SWING ARM LN (G4)	1
6	N-21065	N-21065	LN G4 SIDE BLADE 5/8" X 8" (5/8" HOLES)	2
7	* 21012-4	21012	ROUND CUTTING EDGE 5/8" X 6" X 5' (5/8")	2
8		21012-2	ROUND CUTTING EDGE 5/8" X 6" X 6' (5/8")	1
9	25AB2001004	25AB2001004	PIN HEX HEAD 2 " WITH HOLE	2
10	25AB2001012	25AB2001012	PIN HEX HEAD 2 " WITH HOLE	2
11	25AB2002204	25AB2002204	PIN HEX HEAD 2 " WITH HOLE	1
12	45AB100080308	45AB100080308	HEX BOLT 1-8NC X 3 1/2" GR8	8
13	45CA010110200	45CA010110200	SCRAPER BOLT DOME HEAD 5/8"-11NC X 2" GR5	42
14	47AB10008	47AB10008	NYLON LOCK NUT 1"-8NC	8
15	47AC01011	47AC01011	STOVER LOCK NUT 5/8-11NC	42

**\* Round cutting edge 5/8" X 6' X 7' (5/8" bolt) for the 14' model (2X)**

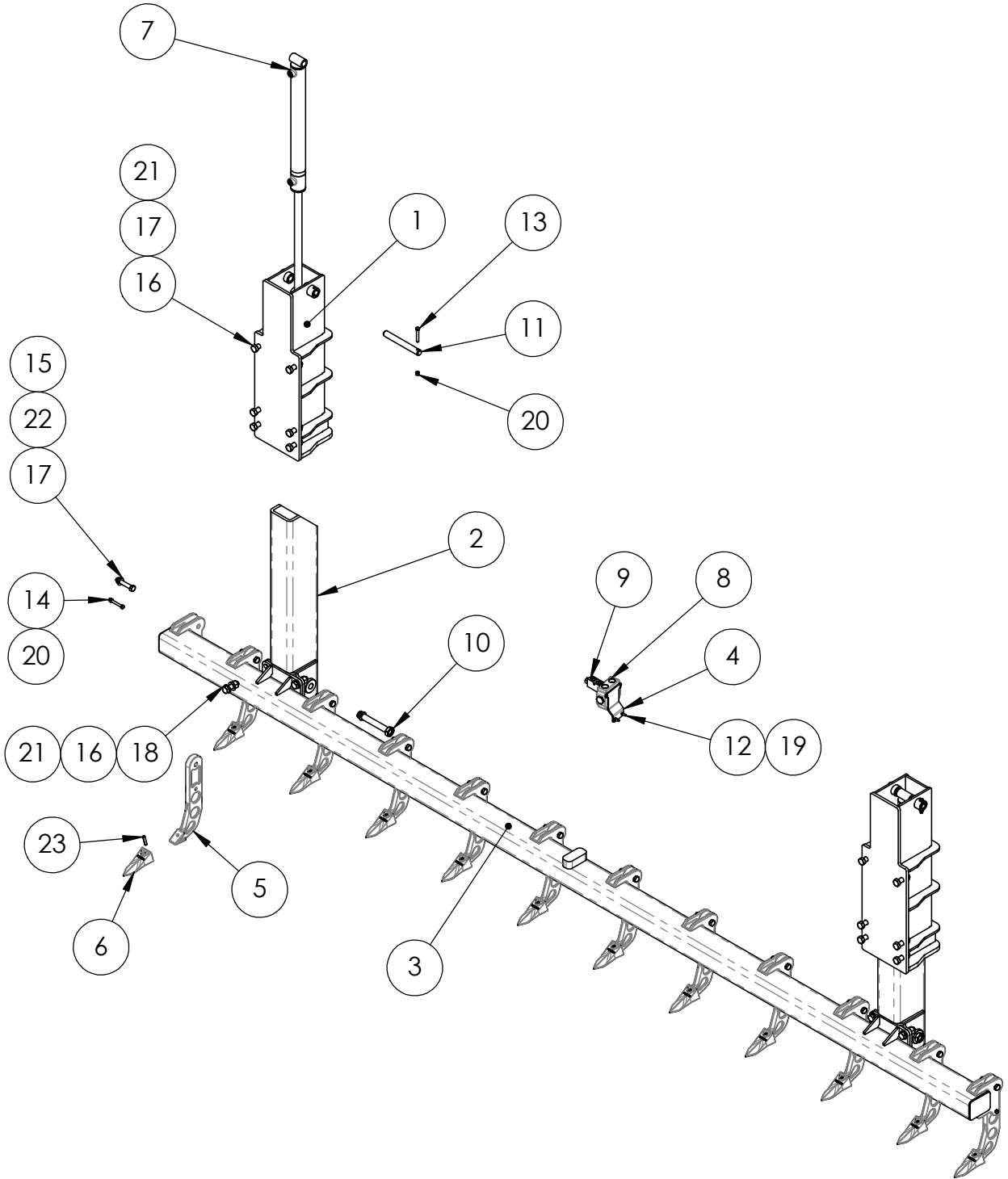
ITEM	PART NUMBER		DESCRIPTION	QTY
	18'	20'		
1	N-05277	N-05295	FRAME LN G4	1
2	N-05278	N-05278	SWIVEL DRAWBAR LN G4	1
3	N-05279	N-05279	MAIN DRAWBAR LN G4	1
4	N-05280	N-05296	REINFORCEMENT BAR LN G4	2
5	N-01168	N-01178	SWING ARM LN (G4)	1
6	N-21065	N-21065	LN G4 SIDE BLADE 5/8" X 8" (5/8" HOLES)	2
7	-	21012	ROUND CUTTING EDGE 5/8" X 6" X 5' (5/8")	4
8	21012-2	-	ROUND CUTTING EDGE 5/8" X 6" X 6' (5/8")	3
9	25AB2001004	25AB2001004	PIN HEX HEAD 2 " WITH HOLE	2
10	25AB2001012	25AB2001012	PIN HEX HEAD 2 " WITH HOLE	2
11	25AB2002204	25AB2002204	PIN HEX HEAD 2 " WITH HOLE	1
12	45AB100080308	45AB100080308	HEX BOLT 1-8NC X 3 1/2" GR8	8
13	45CA010110200	45CA010110200	SCRAPER BOLT DOME HEAD 5/8"-11NC X 2" GR5	42
14	47AB10008	47AB10008	NYLON LOCK NUT 1"-8NC	8
15	47AC01011	47AC01011	STOVER LOCK NUT 5/8-11NC	42



**SCARIFIER TEETH ASS LN (G4) 14', 16', 18', 20'**  
N0214-21E06, N0216-21E06, N0218-21E07, N0220-21E01

Parts

(OPTION)





**SCARIFIER TEETH ASS LN (G4) 14', 16', 18', 20'**  
**N0214-21E06, N0216-21E06, N0218-21E07, N0220-21E01**

*Parts*

ITEM	PART NUMBER		DESCRIPTION	QTY	
	<b>14'</b>	<b>16'</b>		<b>14'</b>	<b>16'</b>
1	N-21066	N-21066	SCARIFIER POST LN G4	2	2
2	N-21067	N-21067	SCARIFIER SLIDING POST	2	2
3	N-21073	N-21071	SCARIFIER TEETHSUPPORT LN G4	1	1
4	N-21069	N-21069	PROPORTIONAL FLOW DIVIDER SUPPORT	1	1
5	UN-21001-P3	UN-21001-P3	SCARIFIER TIP HOLDER (BLACK)	10	12
6	UN-21002-P3	UN-21002-P3	SCARIFIER TIP (BLACK)	10	12
7	30022-8	30022-8	HYD. CYLINDER 2" X 20" (BUSHING)	2	2
8	31020	31020	PROPORTIONAL FLOW DIVIDER	1	1
9	31069	31069	DOUBLE PILOT OPERATED CHECK VALVE (3/8" ORB)	1	1
10	25AB1000600	25AB1000600	PIN HEX HEAD 1 " WITH HOLE	2	2
11	25AC1000804	25AC1000804	PIN 1" X (1 HOLE)	2	2
12	45AA004200100	45AA004200100	HEX BOLT 1/4-20NC x 1" GR5	2	2
13	45AA006160208	45AA006160208	HEX BOLT 3/8-16NC x 2 1/2" GR5	2	2
14	45AA006160300	45AA006160300	HEX BOLT 3/8-16NC X 3" GR5	10	12
15	45AA010110308	45AA010110308	HEX BOLT 5/8-11NC X 3 1/2" GR5	10	12
16	45AA012100208	45AA012100208	HEX BOLT 3/4-10NC X 2 1/2" GR5	20	20
17	46AB010	46AB010	HARDENED FLAT WASHER 5/8	10	12
18	46AB012	46AB012	HARDENED FLAT WASHER 3/4"	16	16
19	47AB00420	47AB00420	NYLON LOCK NUT 1/4-20 NC	2	2
20	47AB00616	47AB00616	NYLON LOCK NUT 3/8"-16NC	12	14
21	47AB01210	47AB01210	NYLON LOCK NUT 3/4-10NC	20	20
22	47AC01011	47AC01011	STOVER LOCK NUT 5/8-11NC	10	12
23	49AA060200	49AA060200	SPRING PIN 3/8" x 2"	10	12

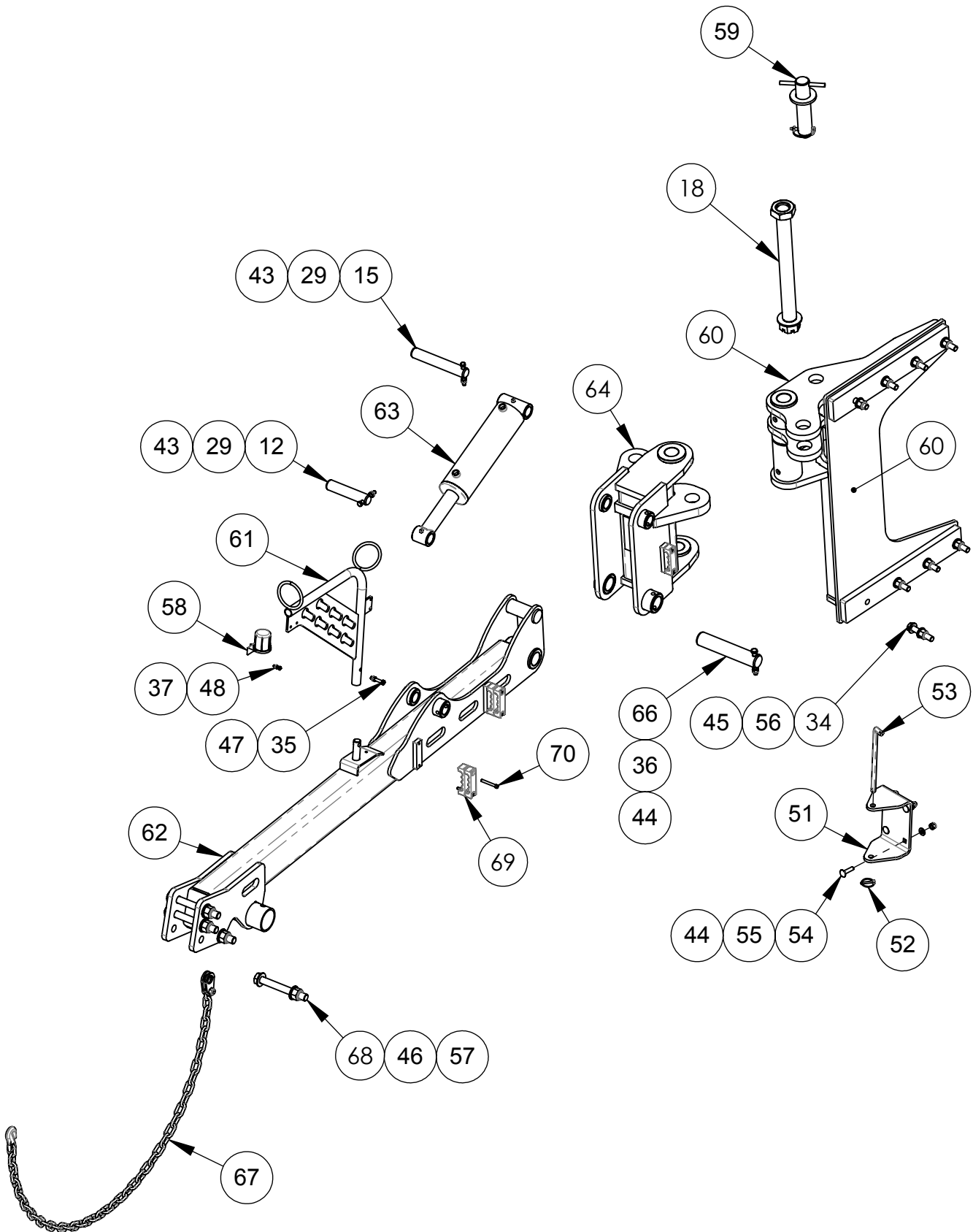




**SCARIFIER TEETH ASS LN (G4) 14', 16', 18', 20'**  
**N0214-21E06, N0216-21E06, N0218-21E07, N0220-21E01**

*Parts*

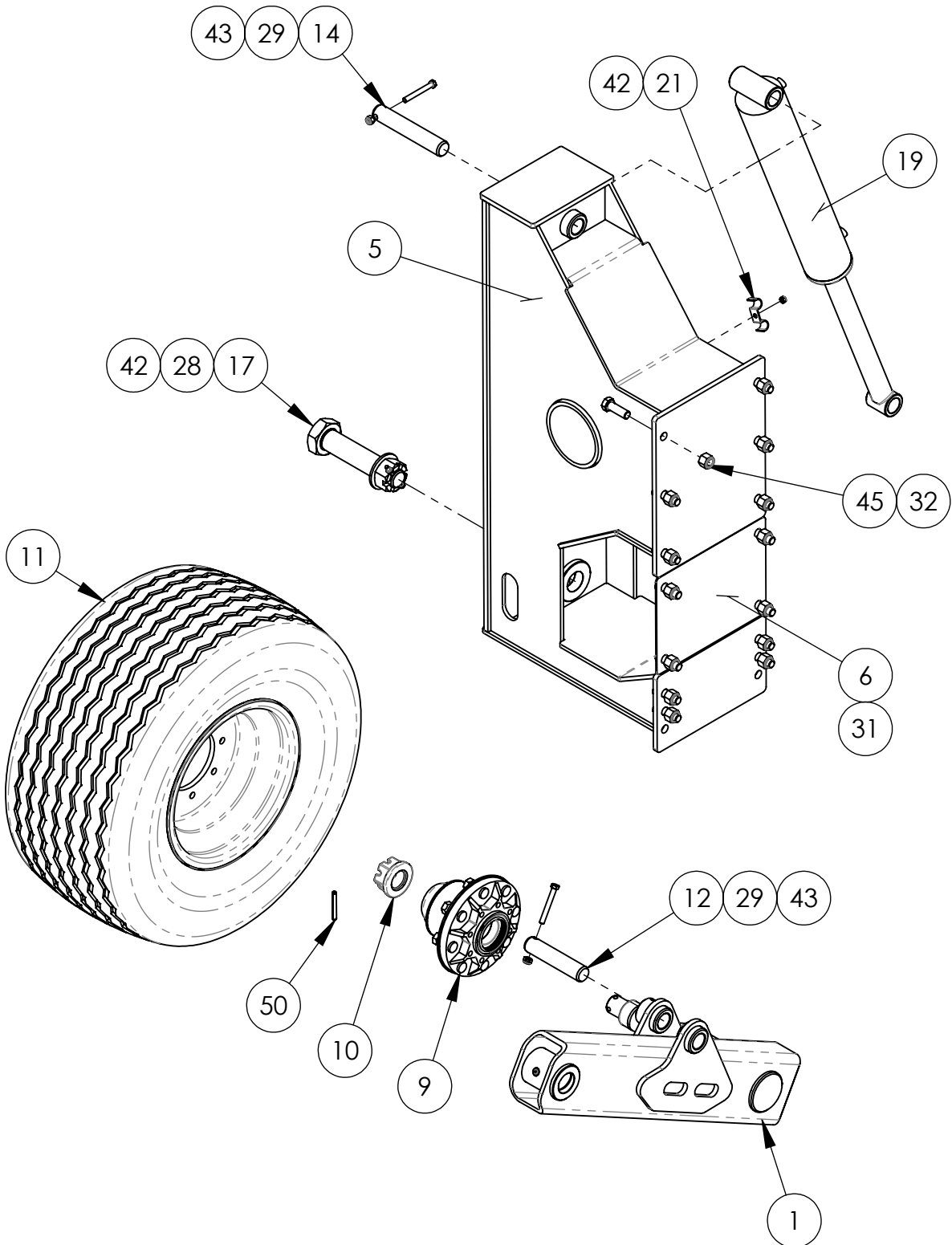
ITEM	PART NUMBER		DESCRIPTION	QTY	
	18'	20'		18'	20'
1	N-21066	N-21066	SCARIFIER POST LN G4	2	2
2	N-21067	N-21067	SCARIFIER SLIDING POST	2	2
3	N-21068	N-21072	SCARIFIER TEETH SUPPORTLN G4	1	1
4	N-21069	N-21069	PROPORTIONAL FLOW DIVIDER SUPPORT	1	1
5	UN-21001-P3	UN-21001-P3	SCARIFIER TIP HOLDER (BLACK)	12	14
6	UN-21002-P3	UN-21002-P3	SCARIFIER TIP (BLACK)	12	14
7	30022-8	30022-8	HYD. CYLINDER 2" X 20" (BUSHING)	2	2
8	31020	31020	PROPORTIONAL FLOW DIVIDER	1	1
9	31069	31069	DOUBLE PILOT OPERATED CHECK VALVE (3/8" ORB)	1	1
10	25AB1000600	25AB1000600	PIN HEX HEAD 1 " WITH HOLE	2	2
11	25AC1000804	25AC1000804	PIN 1" X (1 HOLE)	2	2
12	45AA004200100	45AA004200100	HEX BOLT 1/4-20NC x 1" GR5	2	2
13	45AA006160208	45AA006160208	HEX BOLT 3/8-16NC x 2 1/2" GR5	2	2
14	45AA006160300	45AA006160300	HEX BOLT 3/8-16NC X 3" GR5	12	14
15	45AA010110308	45AA010110308	HEX BOLT 5/8-11NC X 3 1/2" GR5	12	14
16	45AA012100208	45AA012100208	HEX BOLT 3/4-10NC X 2 1/2" GR5	20	20
17	46AB010	46AB010	HARDENED FLAT WASHER 5/8	12	14
18	46AB012	46AB012	HARDENED FLAT WASHER 3/4"	16	16
19	47AB00420	47AB00420	NYLON LOCK NUT 1/4-20 NC	2	2
20	47AB00616	47AB00616	NYLON LOCK NUT 3/8"-16NC	14	16
21	47AB01210	47AB01210	NYLON LOCK NUT 3/4-10NC	20	20
22	47AC01011	47AC01011	STOVER LOCK NUT 5/8-11NC	12	14
23	49AA060200	49AA060200	SPRING PIN 3/8" x 2"	12	14





**TRANSPORT ASS LN G4**  
**N02-05E09 (OPTION)**

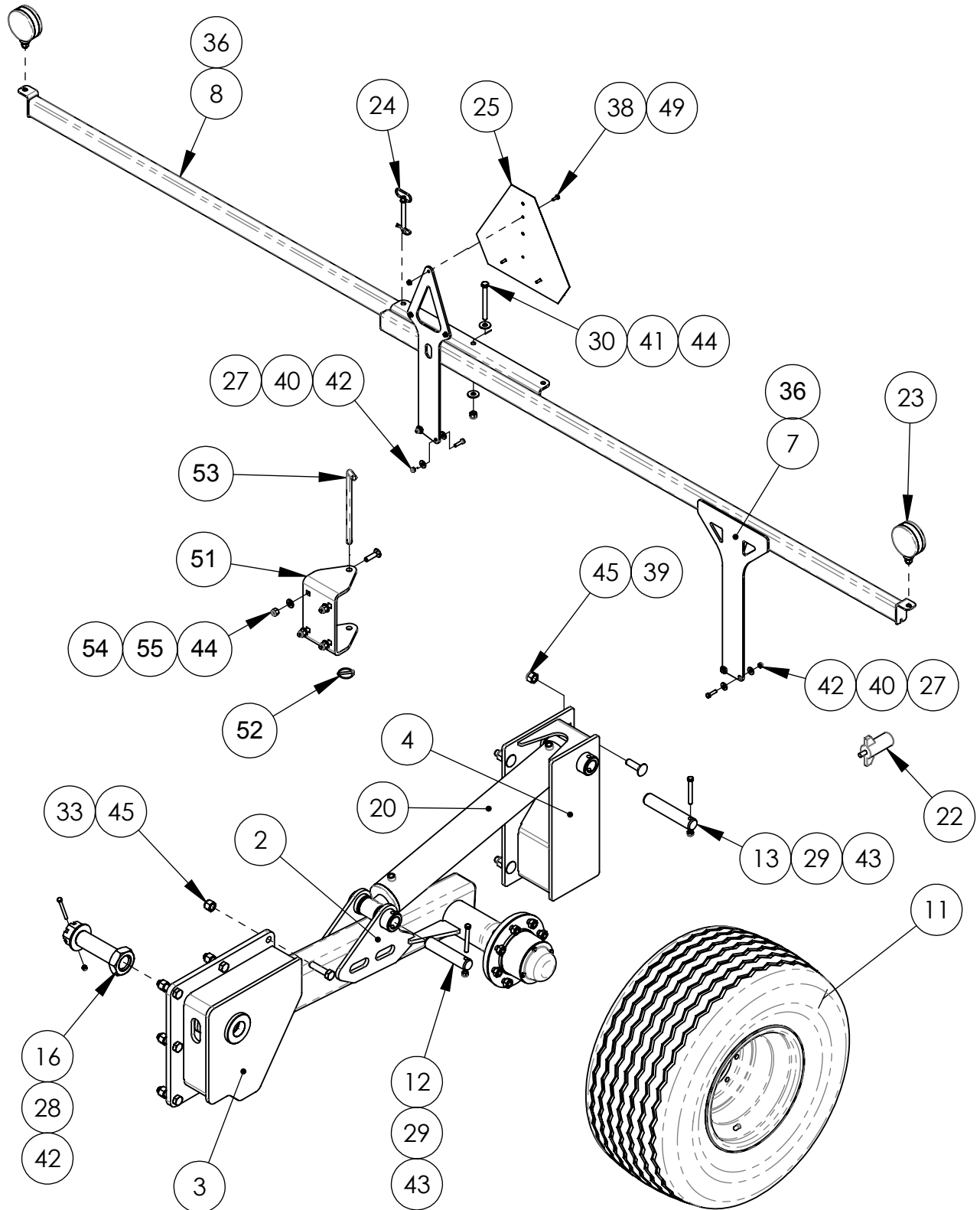
Parts





**TRANSPORT ASS LN G4**  
**N02-05E09 (OPTION)**

Parts





**TRANSPORT ASS LN G4**  
**N02-05E09 (OPTION)**

*Parts*

ITEM	NO	DESCRIPTION	QTY
1	N-05287	SWIVEL ARM SHAFT LN G4	1
2	N-05286	TRANSPORT WHEEL SWIVEL ARM LN G4	1
3	N-05265	FRAME TRANSPORT ARM SLN	1
4	N-05266	FRAME TRANSPORT ARM SLN	1
5	N-05272	FRAME TRANSPORT ARM SLN	1
6	N-05272-12	REAR COVER	1
7	N-32020	SIGNALISATION SUPPORT	1
8	N-32021	SIGNALISATION SUPPORT	1
9	01002-5	12,000 LBS HUB	2
10	01008-5	CASTEL NUT 1 3/4-12 UN	2
11	03029	TIRE AND WHEEL 15.0/55-17	2
12	25AC1080700	PIN 1 1/2" ( 1 HOLE)	3
13	25AC1080800	PIN 1 1/2" ( 1 HOLE)	1
14	25AC1080808	PIN 1 1/2" ( 1 HOLE)	1
15	25AC1080904	PIN 1 1/2" ( 1 HOLE)	1
16	25AB2000608	PIN HEX HEAD 2 " WITH HOLE	1
17	25AB2000700	PIN HEX HEAD 2 " WITH HOLE	1
18	25AB2001900	PIN HEX HEAD 2 " WITH HOLE	1
19	30004-5	HYD. CYLINDER 4" X 18" (BUSHING)	1
20	30004-3	HYD. CYLINDER 4" X 24" (BUSHING)	1
21	31015-2	DOUBLE HOSE CLAMP 3/4"	1
22	32028	MALE CONNECTOR 7 PLUG WITH SPRING	1
23	32029	YELLOW STOP LIGHT 4"	2
24	35006-5	PIN 1/2" X 4"	1
25	36002	SLOW MOVING VEHICLE SIGN (SMV)	1
26	36003-022	RED REFLECTING BAND X 22" LG	2
27	45AA005180104	HEX BOLT 5/16-18NC x 1 1/4" GR5	4
28	45AA005180308	HEX BOLT 5/16-18NC x 3 1/2" GR5	2
29	45AA007140308	HEX BOLT 7/16-14NC x 3 1/2" GR5	6
30	45AA008130500	HEX BOLT 1/2-13NC X 5" GR5	1
31	45AA012100200	HEX BOLT 3/4-10NC X 2" GR5	4
32	45AA012100204	HEX BOLT 3/4-10NC x 2 1/4" GR5	10
33	45AA012100300	HEX BOLT 3/4-10NC X 3" GR5	6
34	45AA012100400	HEX BOLT 3/4-10NC X 4" GR5	8
35	45AA006160200	HEX BOLT 3/8-16NC x 2" GR5	1
36	45AA008130400	HEX BOLT 1/2-13NC X 4" GR5	1
37	45AA004200100	HEX BOLT 1/4-20NC x 1" GR5	2
38	45AE004200012	WHIZ-LOCK BOLT 1/4-20NC X 3/4"	3
39	45CD012100208	CARRIAGE BOLT 5/8"-11NC X 2 1/2" GR8	4
40	46AA005	FLAT WASHER 5/16"	8
41	46AA008	FLAT WASHER 1/2"	2
42	47AB00518	NYLON LOCK NUT 5/16"-18NC	7
43	47AB00714	NYLON LOCK NUT 7/16"-14NC	6
44	47AB00813	NYLON LOCK NUT 1/2-13 NC	10



**TRANSPORT ASS LN G4**  
**N02-05E09 (OPTION)**

*Parts*

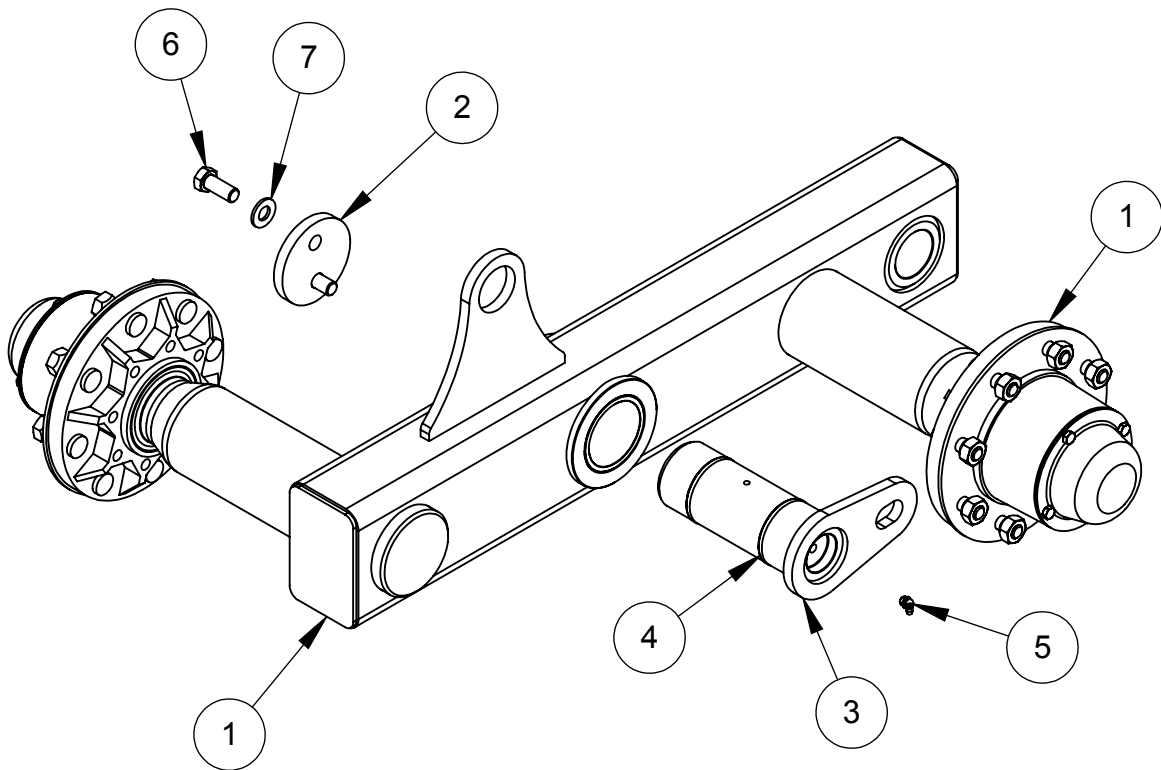
ITEM	NO	DESCRIPTION	QTY
45	47AB01210	NYLON LOCK NUT 3/4-10NC	32
46	47AB10008	NYLON LOCK NUT 1"-8NC	4
47	47AB00616	NYLON LOCK NUT 3/8"-16NC	1
48	47AB00420	NYLON LOCK NUT 1/4-20 NC	2
49	47AE00420	FLANGE NUT 1/4-20NC	3
50	49AA060300	SPRING PIN 3/8" X 3"	2
51	N-05319	LN G4 BRACE ANCHOR	2
52	35001-2	LYNCH PIN 1/4" X 1 3/4"	2
53	N-25084	DRAWBAR ATTACH PIN	2
54	45CC008130200	CARRIAGE BOLT 1/2"-13NC X 2" GR5	8
55	46AB008	HARDENED FLAT WASHER 1/2"	8
56	46AB012	HARDENED FLAT WASHER 3/4"	16
57	46AB100	HARDENED FLAT WASHER 1"	8
58	32033	PROTECTIVE PLUG HOLDER	1
59	N-25087	PIN 2" X 7"	1
60	N-05326	TRANSPORT MODULE DRAWBAR	1
61	N-43066	SWIVEL HOSE SUPPORT	1
62	N-05328	AUXILIARY TIMMON SLN G4	1
63	30004-4	HYD. CYLINDER 4" X 10" (BUSHING)	1
64	N-05327		1
65	35048	LOCK PIN 3/8" X 2 1/2"	1
66	25AC2001004	PIN 2" (1 HOLE)	1
67	07037-4	CHAIN SAFETY 1/4" x 46" Lg - 21,000 lb	1
68	45AB100080800	HEX BOLT 1"-8NC X 8" GR8	4
69	UN-31021-11	HOSE CLAMP	5
70	45BA005180208	SOCKET CAP SCREW 5/16-18NC X 2 1/2"	4
71	45BA005180108	SOCKET CAP SCREW 5/16-18NC X 1 1/2"	2
72	35012	STRAIGHT GREASE FITTING 1/8 NPT	2



# TANDEM FIXED RIGHT LN G4 N02-01E28

Parts

ITEM	NO	DESCRIPTION	QTY
1	N02-01M01	RIGHT FIXED TANDEM LN G4 (MONT02)	1
2	N-25082	LN G4 SPINDLE (PART)	1
3	N-25086	PIN 3" LN G4 TANDEM	1
4	31050-12	O-RING ORB-232	2
5	35012-7	45 DEG GREASE FITTING 1/8 NPT	1
6	45AA010110108	HEX BOLT 5/8-11NC X 1 1/2" GR5	2
7	46AB010	HARDENED FLAT WASHER 5/8	2

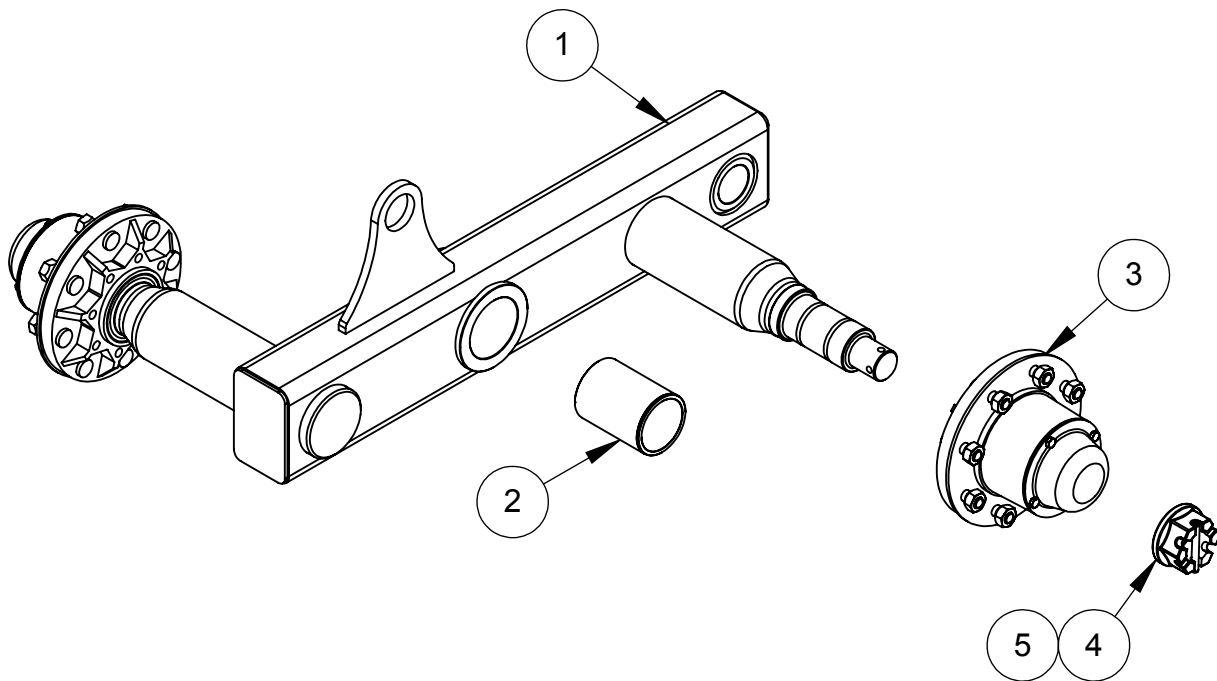




# RIGHT FIXED TANDEM LN G4 (MONT02) N02-01M01

Parts

ITEM	NO	DESCRIPTION	QTY
1	N-01172	RIGHT FIXED TANDEM LN G4	1
2	N-34002	BRONZE BUSHING 3 1/2" X 3" X 4 11/16" LG	1
3	01002-5	12,000 LBS HUB	2
4	01008-5	CASTEL NUT 1 3/4-12 UN	2
5	49AA060300	SPRING PIN 3/8" X 3"	2



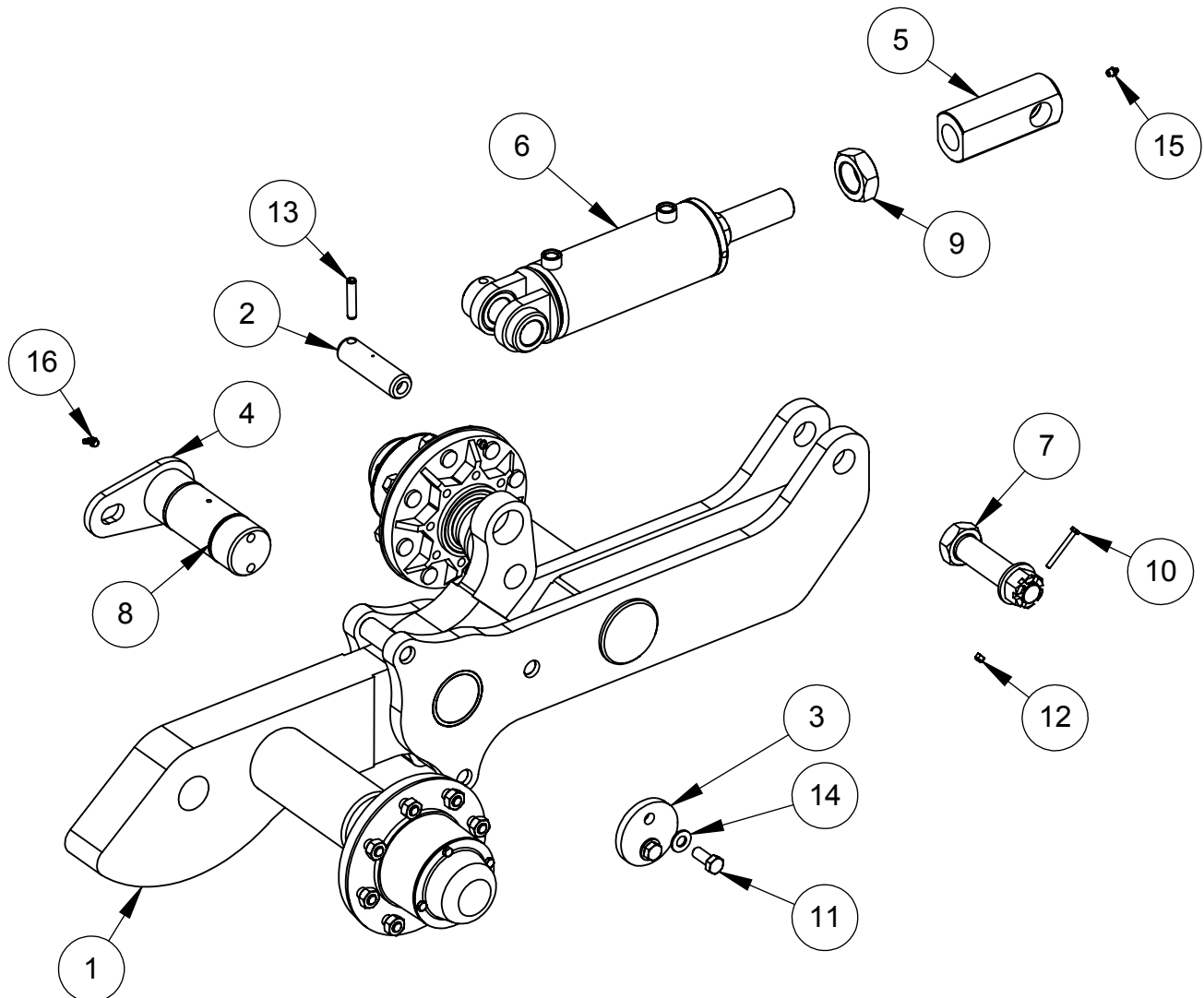




# LEFT ARTICULATED TANDEM LN G4 N02-01E29

Parts

ITEM	NO	DESCRIPTION	QTY
1	N02-01M02	LEFT ARTICULATED TILT LN G4 (MONT02)	1
2	N-25080	5" CYLINDER PIN (12,000 LB AXLE)	1
3	N-25082	LN G4 SPINDLE (PART)	1
4	N-25086	PIN 3" LN G4 TANDEM	1
5	UN-01005	1 1/2" AXLE CYLINDER ADAPTOR	1
6	UN-30611	TANDEM CYLINDER (SLN G4) 4" X 6"	1
7	25AB1080412	HEX HEAD PIN 1 1/2" WITH HOLE	1
8	31050-12	O-RING ORB-232	2
9	47AL11205	HEX JAM NUT 1 3/4"-5NC	1
10	45AA004200208	HEX BOLT 1/4-20NC x 2 1/2" GR5	1
11	45AA010110108	HEX BOLT 5/8-11NC X 1 1/2" GR5	2
12	47AB00420	NYLON LOCK NUT 1/4-20 NC	1
13	49AA080208	SPRING PIN 1/2" x 2 1/2"	1
14	46AB010	HARDENED FLAT WASHER 5/8	2
15	35012	STRAIGHT GREASE FITTING 1/8 NPT	2
16	35012-7	45 DEG GREASE FITTING 1/8 NPT	1



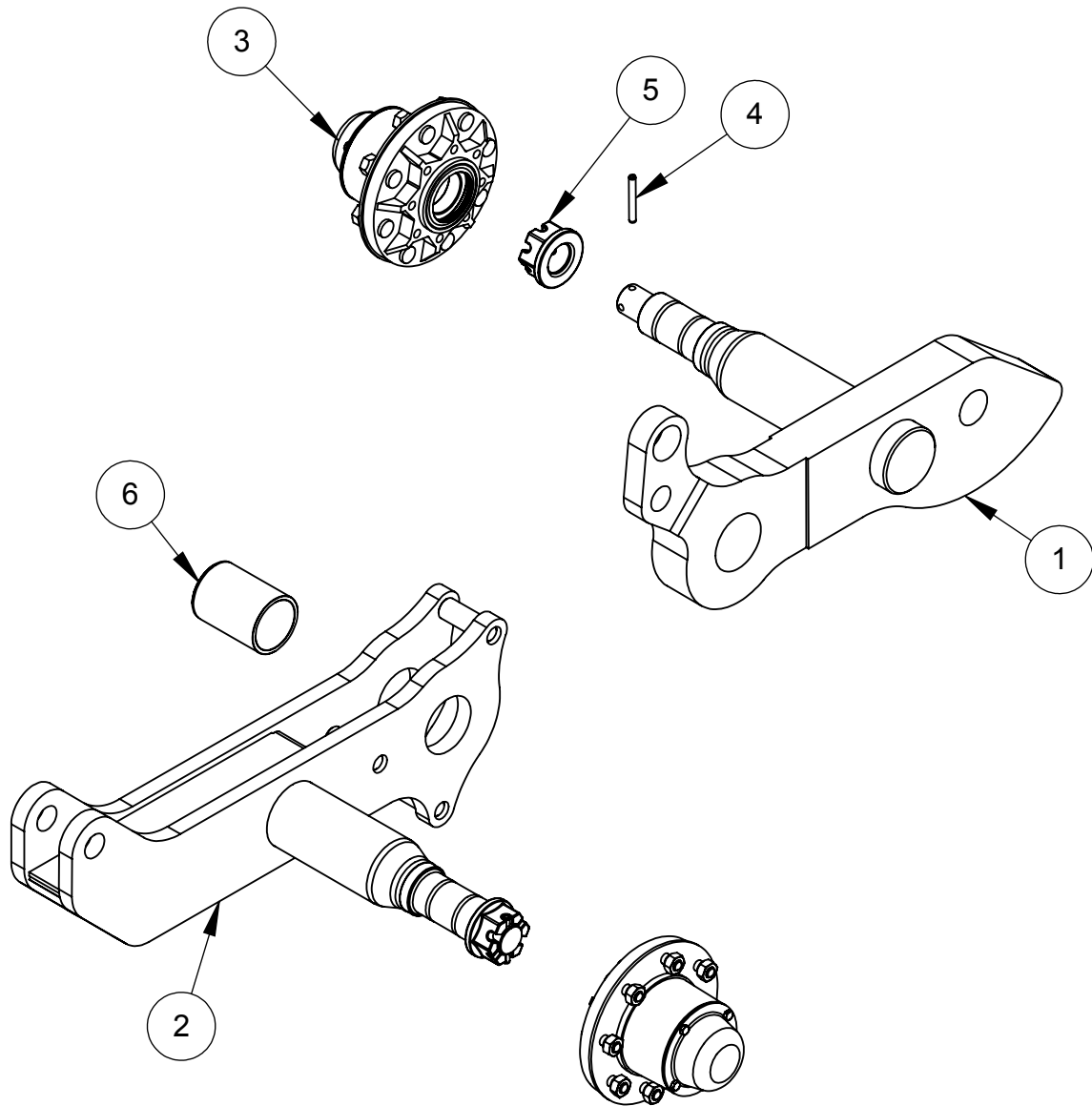




# LEFT ARTICULATED TILT LN G4 (MONT02) N02-01M02

Parts

ITEM	NO	DESCRIPTION	QTY
1	N-01174	LEFT TILT ARM LN G4	1
2	N-01173	LEFT ADJUSTABLE TILT ARM LN G4	1
3	01002-5	12,000 LBS HUB	2
4	49AA060300	SPRING PIN 3/8" X 3"	2
5	01008-5	CASTEL NUT 1 3/4-12 UN	2
6	N-34002	BRONZE BUSHING 3 1/2" X 3" X 4 11/16" LG	1



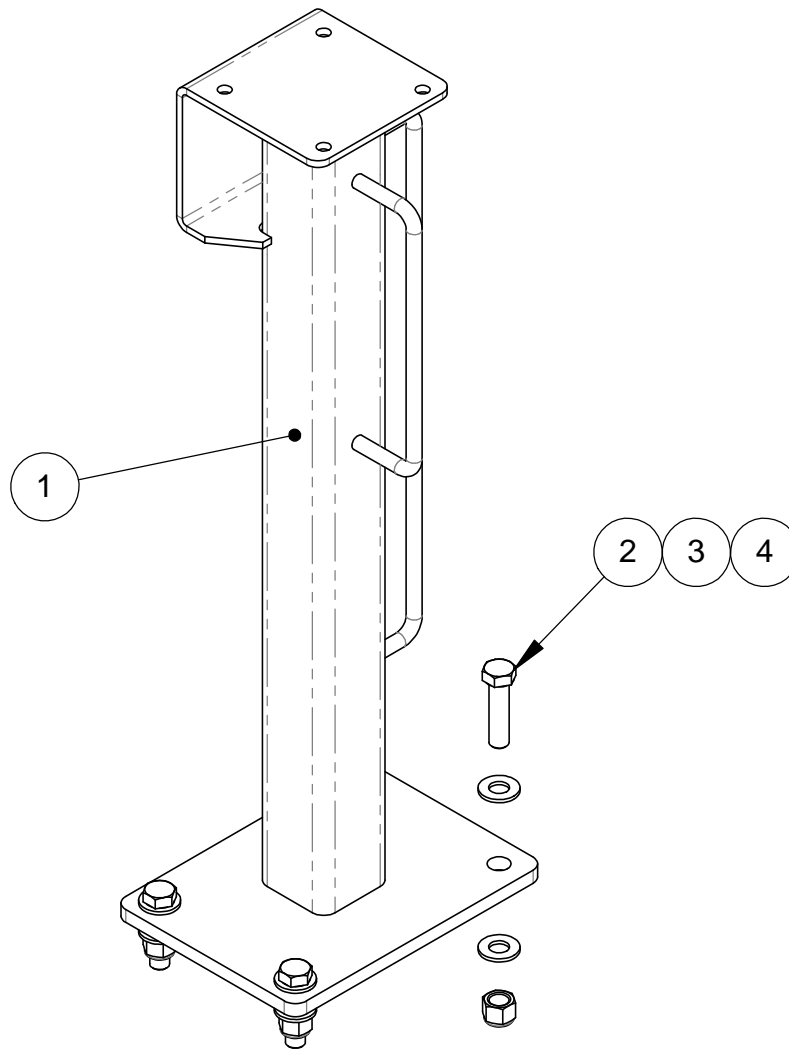




# GPS POST KIT N-36E15 (OPTION)

Parts

ITEM	NO	DESCRIPTION	QTY
1	N-05273	GPS POST	1
2	45AA010110208	HEX BOLT 5/8-11NC X 2 1/2" GR5	4
3	46AB010	HARDENED FLAT WASHER 5/8	8
4	47AB01011	NYLON LOCK NUT 5/8"-11NC	4

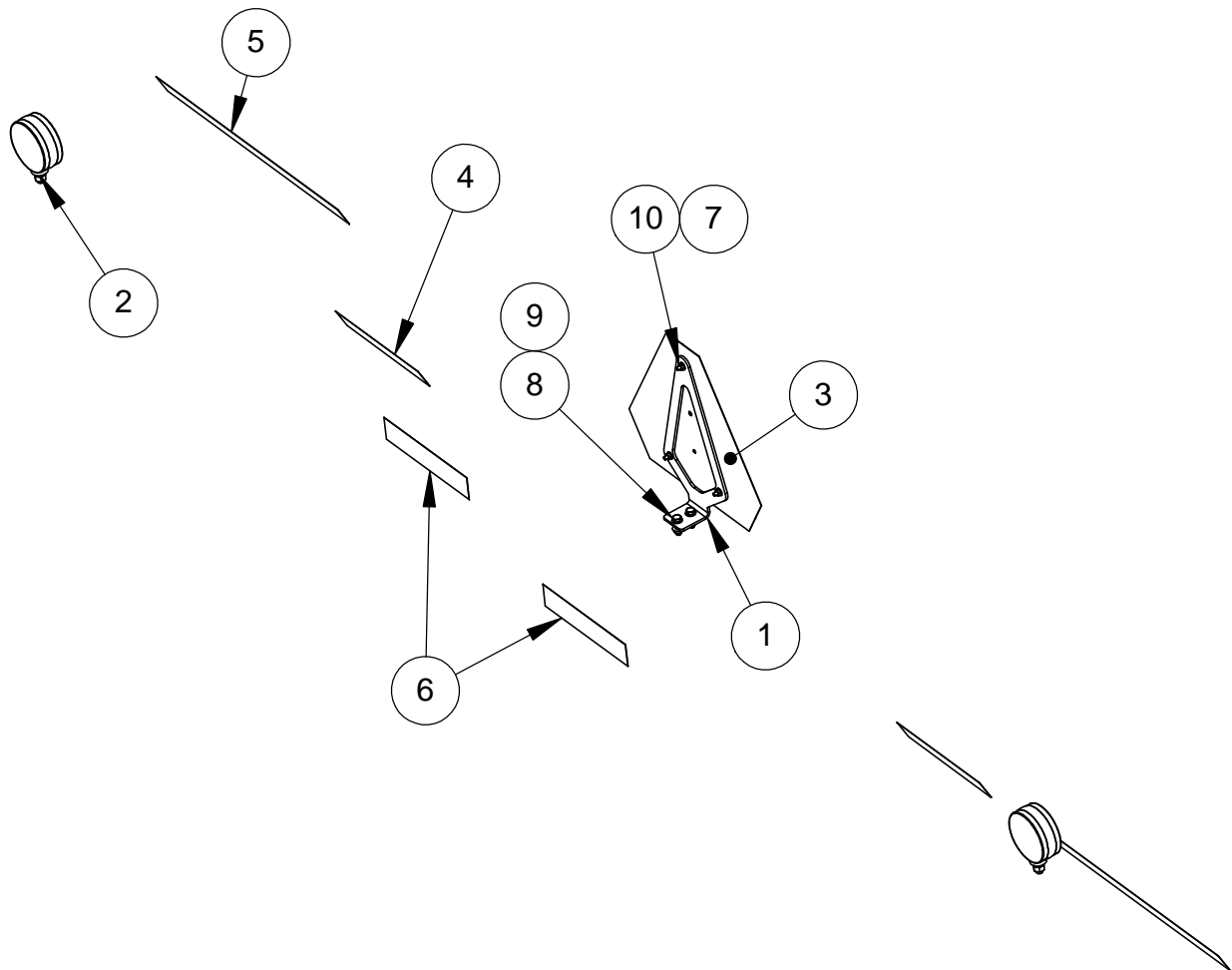




# SIGNALISATION KIT N-36E16 (OPTION)

Parts

ITEM	NO	DESCRIPTION	QTY
1	UN-36001-2	SMV HOLDER	1
2	32029	YELLOW STOP LIGHT 4"	2
3	36002	SLOW MOVING VEHICLE SIGN (SMV)	1
4	36003-010	RED REFLECTING BAND X 10" LG	2
5	36003-022	RED REFLECTING BAND X 22" LG	2
6	36004-010	YELLOW REFLECTING BAND X 10" LG	2
7	45AE004200012	WHIZ-LOCK BOLT 1/4-20NC X 3/4"	3
8	45AE006160104	WHIZ-LOCK BOLT 3/8-16NC X 1 1/4"	2
9	47AE00616	FLANGE NUT 3/8-16NC	2
10	47AE00420	FLANGE NUT 1/4-20NC	3

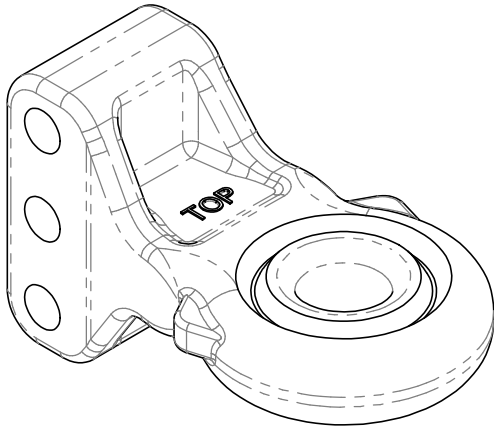




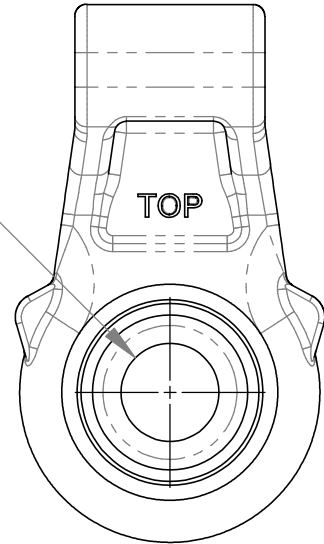
**ATTACHEMENT HAND**  
**(OPTION)**

*Parts*

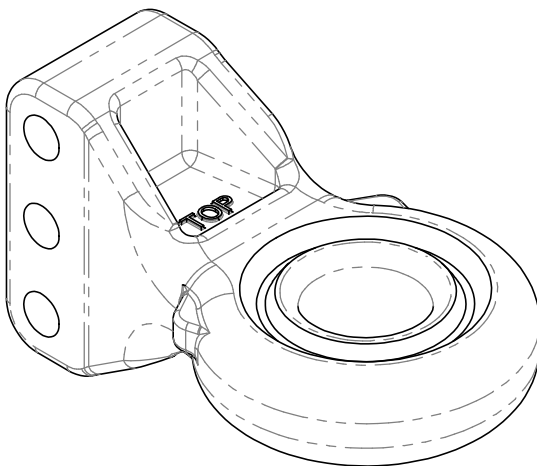
**CATEGORY 4 (2" PIN)**  
**20013**



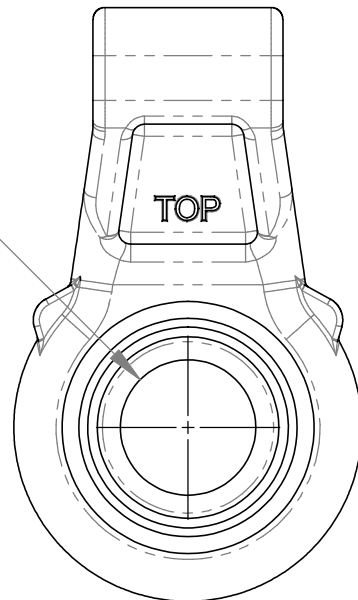
$\varnothing 2 \frac{1}{16}''$



**CATEGORY 5 (2 3/4" PIN)**  
**20013-2**



$\varnothing 2 \frac{13}{16}''$





## SHoule limited guarantee on agricultural and commercial equipment

SHoule Inc guarantees every new farm and commercial product of the manufacturer SHoule against any defect of material and manufacturing, within the framework of a normal use, during one year after the date of retail purchase SHoule will guarantee its product for (1) year, on parts and imperfection of manufacturing This Limited

Guarantee will apply only to equipments made by S.Houle

**EQUIPMENT AND ACCESSORIES WHICH ARE NOT MADE BY S HOULE ARE GUARANTEED ONLY IN THE MEASURE WHICH THE GUARANTEE OF THE ORIGINAL MANUFACTURER DETERMINES AND APPROVES THAT THERE IS A MANUFACTURING DEFECT**

During the period limited by guarantee indicated above, any defect in the material (equipment) or in the manufacturing of any equipment fabricated by S.Houle will be repaired or replaced without responsibility by an authorized independent retailer. An authorized retailer has to make the repair under guarantee or the replacement of parts. The costs of labour must be approved by manufacturing SHoule before beginning (undertaking) the works otherwise these could be totally refused, according to the politics (policy) of working refund (repayment) of S.Houle SHoule reserves the right to supply parts, for replacement which he (it) considers appropriate

**RESPONSIBILITY OF THE BUYER:** This limited guarantee requires (demands) the appropriate maintenance and the overhauls of the agricultural or commercial equipment such as indicated in operator manual supplied with the new equipment. The cost of the regular maintenance or the required services is the responsibility of the buyer. The buyer has to keep his invoices which prove that the maintenance was made

The limited guarantee may be revoked (dismissed) by S.Houle if the above mentioned conditions (requirements) are not respected.

### EXCLUSIONS AND LIMITATIONS

Guarantees WILL NOT APPLY on:

- 1 Any defect which was caused (according to the judgment of SHoule by a use other than that normally planned, or by the following causes: (i) accident (ii) a misuse or a carelessness (negligence) (iii) excessive use (iiii) lack of reasonable and appropriate maintenance, (v) incorrect repair or bad installation (vi) or when warehoused (stored away) (vii) modification not authorized by SHoule (viii) natural disasters (ix) vandalism (x) parts, or accessories installed on the equipment which were not made or not installed by the authorized retailer (xi) elements (xii) collision or accidents
- 2 Any agricultural or commercial equipment which the identification number or serial number or the trade names were changed or removed
- 3 Any agricultural or commercial equipment on services of which the required or recommended overhaul were executed by using parts not made, approved or supplied by SHoule or not meeting the specifications, but without limitation, lubricants (oil, grease) and liquids for hydraulics
- 4 The equipment used for rental, industrial work, construction or if the equipment is used for a purpose other than the application in which it was designated (design) for by SHoule
- 5 Any equipment used for field demonstrations by a retailer not approved by S.Houle. The guarantee will be to the discretion of S.Houle or any other demonstration
- 6 Any defect which was caused (according to the judgment of S.Houle) by the operation of the equipment without submitting itself to the standard (in the standard) procedures of exploitation (operation) described in operator manual
- 7 The guarantee on tires is the responsibility of the manufacturer of the respective product
- 8 Cost of the transport, if necessary, to transport to the retailer S.Houle
- 9 In no case the responsibility of S.Houle can exceed the cost of the product
- 10 SHoule will be subjected in no circumstances to compensate, whoever it is, for the loss of income for a discontinued equipment, for a time of the repairs no matter the reason for this breakdown.
- 11 The costs of estimation or the diagnostic and the overtime of work for the repair are not covered under this limited guarantee policy.
- 12 The depreciation caused by the normal wear, the lack of reasonable and appropriate maintenance, the misuse, and/or the lack of protection during warehousing
- 13 Accessories and electronic components which are not of or from S.Houle are guaranteed only under the limited guarantee by this manufacturer.
- 14 Articles of wear which are registered by the group of products below:

Normal wear parts: flow divider, wear plates, the bolts, the nuts, spring blades, the swivel skid shoe, the special bolts of swivelling skid shoe, slide channels, chains and chain attachments, cast iron shoe, hydraulic hoses, swivel, clutch and their components, the gear box, the shaft, ...

**EXCLUSION FROM GUARANTEES:** SHOULE RESERVES THE RIGHT TO MODIFY, TO CHANGE AND TO IMPROVE THEIR PRODUCTS WITHOUT INCURRING ANY OBLIGATION TO REPLACE PRODUCTS PREVIOUSLY SOLD WITH SUCH A MODIFICATION. NO PERSON IS AUTHORIZED TO GIVE ANOTHER GUARANTEE, OR TO ASSUME ANY ADDITIONAL OBLIGATION ON EQUIPMENTS MADE BY S.HOULE





**S.Houle inc.**

300 Industrial blvd.  
St-Germain-de-Grantham, Quebec, Canada, J0C 1K0  
Phone : 819 395-4380 Fax. : 819 395-5516  
Toll free : 1 888-404-4380  
E-Mail : info@shoule.com Web: www.shoule.com

**Product Registration**

**Dealer instructions:**  
Make sure registration is complete and signed.

**Product Information :**

MACHINE MODEL : \_\_\_\_\_ DELIVERY DATE : \_\_\_\_\_ / \_\_\_\_\_ / \_\_\_\_\_  
mm dd yyyy  
SERIAL NUMBER : \_\_\_\_\_  
OPTIONAL EQUIPMENT : \_\_\_\_\_

**Customer Information :**

FIRST & LAST NAME : \_\_\_\_\_ PHONE : \_\_\_\_\_  
MAILING ADDRESS : \_\_\_\_\_ EMAIL : \_\_\_\_\_  
Civic number and street  
City  
State / Province Zip Code

**Dealer Information :**

DEALER NAME : \_\_\_\_\_ PHONE : \_\_\_\_\_  
MAILING ADDRESS : \_\_\_\_\_ EMAIL : \_\_\_\_\_  
Civic number and street  
City  
State / Province Zip Code

**Signatures :**

\_\_\_\_\_  
Owner or designated representative signature Authorized dealer signature  
**Note : Both dealer and owner must sign in order to validate the warranty.**

**I hereby acknowledge that:**

- |  |  |
|--|--|
| <ol style="list-style-type: none"><li>1. I have received and accepted delivery of equipment described.</li><li>2. The equipment was checked thoroughly for loose or missing parts and has been adjusted in accordance with the pre-delivery checklist.</li><li>3. I have been provided with and have carefully read the instruction manual.</li><li>4. I have read and understand the nature and extent of the warranty and understand clearly that there were and are no other representations or warranties, either express or implied, made by anyone.</li><li>5. A copy of the present document must be completed and transmitted to</li></ol> | <ol style="list-style-type: none"><li>6. S.Houle as soon as possible, in order to process your warranty.</li><li>7. I have been advised on proper operation, maintenance and lubrication procedures of this equipment.</li><li>7. I have been instructed on and do understand the application, limitations and capacities this equipment was designed and recommended for, all as described in the Instruction Manual and other literature published by S.Houle inc.</li></ol> |
|--|--|

ONE YEAR WARRANTY COVER PARTS ONLY, EFFECTIVE WHEN THIS FORM HAS ALL APPLICABLE INFORMATION COMPLETED, IS SIGNED BY BOTH THE OWNER AND THE DEALER AT THE TIME OF DELIVERY, THEN FORWARDED TO **S.HOULE INC.** WARRANTY SERVICE MAY BE DENIED IF THIS FORM CONTAINS FALSE INFORMATION OR IS INCOMPLETE.



### **S.Houle inc.**

300 boul. Industriel  
St-Germain-de-Grantham, Québec, Canada, J0C 1K0  
Tél : 819 395-4380      Téléc. : 819 395-5516  
Sans frais : 1 888-404-4380  
Courriel : [info@shoule.com](mailto:info@shoule.com)      Site : [www.shoule.com](http://www.shoule.com)

### **S.Houle inc.**

300 Industrial blvd  
St-Germain-de-Grantham, Québec, Canada, J0C 1K0  
Phone : 819 395-4380      Fax. : 819 395-5516  
Toll free : 1 888-404-4380  
E-mail : [info@shoule.com](mailto:info@shoule.com)      Web : [www.shoule.com](http://www.shoule.com)